

EpiGrass User Guide

Cláudia Torres Codeço Flávio Codeço Coelho

Draft #69

Acknowledgements

EpiGrass is funded by CNPq. Participants of this project are:
Maria Goreti Freitas Rosas (Fiocruz - IOC); Alexios Zavras (Univ of
Athenas); Pantelis Tsouris (Univ of Athenas); Oswaldo Gonçalves Cruz
(Fiocruz - PROCC); Flavio Codeço Coelho (Fiocruz - PROCC); Cláudia
Torres Codeço (Fiocruz-PROCC).

Preface

THE emergence and re-emergence of infectious diseases and the evolution of resistant pathogens pose a great challenge for Public Health worldwide. Brazil, in particular, is facing increasing problems with the expansion, to urban centers, of diseases previously rural (leishmaniosis), increasing mortality caused by previously benign diseases (dengue), potential emergence of new diseases, and reduction of efficacy of traditional treatment protocols (tuberculosis, malaria, leprosy).

To deal with this situation, it is necessary to think strategically. How can we use our limited resources the best way possible? In other words, how to define public health policies for the use of chemicals and vaccines that optimize their impact in the short and long term? To develop such strategies, it is necessary to consider, and integrate, information from different sources, including biological information regarding host-parasite interaction, parasite response to chemicals or other control element, identification of risk situations for the population under study, identification of alternative control strategies, quantification of available resources, etc. The integration of all these data is often done in an incomplete way, resulting in sub-optimal decision making.

Important for the control of infectious diseases is the characterization of the temporal and spatial distribution of cases and risk factors. Climate, topography, human and vector population density are some features that may restrict diseases to certain geographical areas or seasons. In EpiGrass, the georefered space is the background for simulating intervention scenarios. Computer simulations are more and more used for evaluation of risk and formulation of disease control strategies (Casman et al., 2000). These models are useful for determining, among other things, the expected number of cases in an epidemic (and the required medical cost), compare alternative control strategies (mass vaccination x localized vaccination, for example), for example. However, in general, simulation models do not take into consideration explicitly the spatial heterogeneity that characterizes epidemiological processes (Zaric and Brandeau, 2002). The integration of mathematical models to georefered data is strategic for increasing the applicability of mathematical

models.

EpiGrass is a simulator which implements transmission models in a network where disease transmission occurs in the nodes (that may represent cities, neighborhoods or households) and spatial spread occurs via edges (that represent transportation routes or other forms contact networks). Examples of application of this approach can be found in (Barrett et al., 2005; Meyers et al., 2005).

In EpiGrass, epidemiological models take the form of network epidemiological models. Since decision in this complex context is often based on partial (and often poor) information, a measure of uncertainty is also necessary. This, associated with the stochastic nature of disease transmission makes stochastic models also an important tool.

EpiGrass is not a part of the GRASS GIS system (<http://grass.itc.it>), but can make use of it as well as the R statistical package. GRASS GIS (Geographic Resources Analysis Support System) is a free software geographical information system, originally developed by the U.S. Army Construction Engineering Research Laboratories (USA-CERL, 1982-1995), as a tool for land management and environmental planning. Nowadays, GRASS has become a multi-national initiative, carried on by a team of developers from numerous locations in the world. GRASS 5.7 (current release) has more than 350 modules for management, processing, analysis and visualization of georeferenced data. GRASS GIS was chosen for four main reasons: 1) it provides free access to its internal code and algorithms; 2) availability of detailed documentation; 3) vast amount of code already available; 4) very active community of developers. Statistical analysis in EpiGrass is done in R. The 'R data analysis programming language and environment' is an open source system for statistical computing and graphics (<http://www.r-project.org/>). R consists of a base package and a set of modules for data handling and storage, calculations on arrays, several methods for data analysis, graphical facilities. It also has a well-developed programming language which includes conditionals, loops, user-defined recursive functions and input and output facilities.

R and GRASS are integrated through a R/GRASS interface (Bivand, 2000). Through this interface, R runs from within GRASS. In the command line of GRASS, the user types R to open a R prompt. Within R, the R/GRASS interface is loaded by the commands:

```

1 > library (GRASS)
2 > grassobject <- gmeta ()
3 > summary ( grassobject )

```

The library GRASS contains a set of interface functions, including the

definition of a data class named `grassmeta`, that can receive GRASS data.

EpiGrass is an opensource software. The financing for the EpiGrass comes from the Brazilian Research Council (CNPq), as part of a nation-wide initiative by the federal government [urlhttp://www.iti.br/](http://www.iti.br/), to develop and use free/opensource software as the standard computational platform throughout the country.

EpiGrass is the product of a collaboration between researchers from many disciplines: Flávio Coelho, Cláudia Codeço and Oswaldo Gonçalves Cruz are epidemiological modellers at the Oswaldo Cruz Foundation (Rio de Janeiro - Brazil); Maria Goreti Rosa Freitas is an entomologist and epidemiologist working on spatial processes associated to Dengue Fever, at Oswaldo Cruz Foundation; Alexios Zavras is an expert in software development and an advocate of the Free Source Movement in Greece; Pantelis Tsouris is an engineer specialized in hardware development; Igor Cabral Correa is an enthusiastic and very smart programmer. We hope that, with this first release, this small community will grow and prosper.

Contents

Preface	i
1 Overview of the EpiGrass	1
1.1 Components	1
1.2 Modeling Approach	1
1.3 Geographical Network Models	2
1.3.1 Defining the Cartographic Background	2
1.3.2 Defining Nodes	2
1.3.3 Defining Edges	3
1.3.4 Defining models	3
1.4 The Simulation	4
1.4.1 Output	4
2 Epidemic Models	7
2.1 Introduction	7
2.2 Disease models	8
2.2.1 Dispersal of infected individuals	9
2.2.2 Typology of infectious diseases and corresponding models	9
2.2.3 Stochastic models	15
2.3 Network transportation models	15
3 Building and Installing	17
3.1 Required Packages	17
4 Using Epigrass	27
4.1 Data	27
4.1.1 Site data file	27
4.1.2 Edge data file	29
4.2 Specifying a model: the script	30
4.2.1 PART 1: THE WORLD	31
4.2.2 PART 2: EPIDEMIOLOGICAL MODEL	32

4.2.3	PART 3: TRANSPORTATION MODEL	35
4.2.4	SIMULATION AND OUTPUT	36
4.3	User defined models	38
4.4	Using EpiGrass for specific tasks	38
4.4.1	Describing a network	38
4.4.2	Comparing networks	39
4.4.3	Simulate disease spread from a single site	40
4.4.4	Simulating vaccination campaigns	41
4.4.5	Simulating quarantines	41
4.4.6	Comparing strategies	42
4.5	The Graphical User Interface(GUI)	42
4.5.1	Run Options	43
4.5.2	Settings	44
4.5.3	Utilities	44
4.5.4	Visualization	44
4.5.5	Operation	48
5	Interpreting the output	49
5.1	Visualization	49
5.2	Database	50
5.3	Epidemiological descriptors	50
5.4	Network Descriptive Statistics	51
5.5	Site Oriented Statistics	55
A	Example of Model Definition Script	59
B	Useful GRASS Commands	63
B.1	Exporting a GRASS Vector Layer	63
C	Using R to Analyze EpiGrass' Data	65
C.1	Accessing The MySQL server	65
C.2	Visualizing the Data	67

List of Figures

2.1	SIR-like models	10
2.2	SIPR-like models.	13
2.3	A simple transportation network	16
4.1	First tab of the EpiGrass GUI.	43
4.2	Second tab of the GUI.	45
4.3	Third tab of the GUI	46
4.4	Fourth tab of the GUI	47
5.1	Shortest path distribution for the mesh graph (see demo). . .	52
5.2	Adjacency matrix of a simple mesh network (see demo)	53

List of Tables

2.1	Symbols used in the models and their meaning	12
4.1	Type of models implemented in EpiGrass	32

Listings

3.1	Installation of Python in a Debian-based Gnu/Linux distribution.	18
3.2	Installing Numeric python on Gentoo GNU/Linux	18
3.3	Installing Numeric python on Debian GNU/Linux	18
3.4	Installing Matplotlib on Gentoo GNU/Linux	18
3.5	Adding specific sources to apt-get.	19
3.6	Installing Matplotlib on Debian GNU/Linux	19
3.7	Installing PyQt python on Gentoo GNU/Linux	19
3.8	Installing PyQt python on Debian GNU/Linux	19
3.9	Installing MySQL on Gentoo GNU/Linux	20
3.10	Installing MySQL on Debian GNU/Linux	20
3.11	Post-install configuration of mysql on Gentoo	20
3.12	Post-install configuration of mysql on Debian	20
3.13	Installing MySQL-python on Gentoo GNU/Linux	20
3.14	Installing MySQL-python on Debian GNU/Linux	20
3.15	Installing R on Gentoo GNU/Linux	21
3.16	Installing R on Debian GNU/Linux	21
3.17	Installing additional packages from within R	21
3.18	Installing RPy on Gentoo GNU/Linux	21
3.19	Installing RPy on Debian GNU/Linux	21
3.20	Testing the installation of RPy	22
3.21	Installing RPy from source on GNU/Linux	22
3.22	Building R from source	22
3.23	Installing GRASS on Gentoo GNU/Linux	23
3.24	Installing GRASS on Debian GNU/Linux	23
3.25	Installing L ^A T _E X and PDFL ^A T _E X on Gentoo GNU/Linux	24
3.26	Installing L ^A T _E X and PDFL ^A T _E X on Debian GNU/Linux	24
3.27	Installing Vpython pre-requisites on Gentoo GNU/Linux	24
3.28	Installing Vpython pre-requisites on Debian GNU/Linux	24
3.29	Testing Vpython	24
3.30	Intalling EpiGrass	25

3.31	Installing EpiGrass on Gentoo GNU/Linux	25
4.1	Defining model parameter and initial values	32
4.2	Defining epidemic events	34
B.1	Listing vector layers.	63
B.2	Visualizing a vector layer	64
B.3	Exporting a vector layer to an ascii file	64
C.1	Starting R	65
C.2	Loading required packages.	66
C.3	Specifying the type of server and opening a connection.	66
C.4	Listing existing tables.	66

Chapter 1

Overview of the EpiGrass

E^{PIGRASS} is a platform for network epidemiological simulation and analysis. It enables researchers to perform comprehensive spatio-temporal simulations incorporating epidemiological data and models for disease transmission and control in order to create sophisticated scenario analyses.

1.1 Components

The EpiGrass system is composed of 4 components, The EpiGrass simulator, the EpiGrass database, EpiGrass visualization module, and the report generator. They are all used through EpiGrass' graphical user interface (GUI).

1.2 Modeling Approach

The geographical networks over which epidemiological processes take place can be very straightforwardly represented in a object-oriented framework. In such a framework, the nodes and edges of the geographical networks are objects with their attributes and methods.

Once the archetypal node and edge objects are defined with appropriate attributes and methods, then a code representation of the real system can be constructed, where cities (or other geographical localities) and transportation routes are instances of the node and edge objects, respectively. The whole network is also an object with a whole collection of attributes and methods.

This framework leads to a compact and hierarchical computational model consisting of a network object containing a variable number of node and edge objects. This framework also do not pose limitations to encapsulation, potentially allowing for networks within networks if desirable (not yet implemented).

For the end user this framework is transparent since it mimics the natural structure of the real system. Even after the model is converted into a code object, all of its component objects remain accessible internally, facilitating the exchange of information between all levels of the model.

1.3 Geographical Network Models

EpiGrass's geo-referenced models are built from two basic sources of data: GRASS vector layer (optional) which provide the cartographical base over which the models are specified, and specific data about nodes and edges that are provided by the user for the network of interest.

1.3.1 Defining the Cartographic Background

If the user has a GRASS location for the georeferred data, this can be passed to EpiGrass. In this case, the cartographic background is defined by selecting a GRASS Location dataset¹. From this Location various types information can be extracted for inclusion in the model's definition of visualization.

If the user does not have a GRASS location, he can still use EpiGrass. In this case, the georeferred data is read only from two .csv files (more on that ahead).

1.3.2 Defining Nodes

A graph has nodes and edges. Nodes can be cities or other localities depending on the model being constructed. The definition of nodes require the setting of many attributes listed below. The nodes will have many more attributes defined at run-time which will depend on other aspects of the model, these will be discussed later.

The data required, at build time, to create nodes come from a CSV (comma-separated-values) ASCII-text file, with the following attributes, (in this order. See demos):

Latitude, Longitude This attribute will be used to geo reference the node. The coordinate system must match those used in the cartographic base imported from GRASS. Coordinates can be coded in either decimal or sexagesimal format.

Name Used for identification purposes only. It can be a city name, for instance.

¹See GRASS documentation on how to setup a Location

Population Since the simulation models will all be of a populational nature. Population size must be specified at build time.

Geocode A Unique Geocode (a number) is required. It will be used as a label/index to facilitate reference to specific nodes.

1.3.3 Defining Edges

In EpiGrass' graphs, edges represent transportation routes. Similarly to nodes, edges are defined at build-time with a reduced set of attributes which will be extended at run-time. EpiGrass also expects to get these attributes from a CSV file (See demos for format details):

Source The name of the source node. The edges are bi-directional, but the nodes are labeled source and destination for reference purposes.

Destination The name of the destination node.

Forward migration Migration rate from source to destination, in number of persons per unit of time.

Backward migration Migration rate from destination to source, in number of persons per unit of time.

Length distance in kilometers (or another unit) from source to destination via the particular route (not straight line distance).

Source's geocode This is the unique numerical identifier used in the sites file.

Destination's geocode This is the unique numerical identifier used in the sites file.

1.3.4 Defining models

The word model in EpiGrass can mean two distinct objects: The network model and the node's epidemic model.

Node objects, in an EpiGrass model, contain well-mixed population dynamic models within them. These models determine the dynamics of epidemics within the particular environments of each node. EpiGrass comes with a few standard epidemiological models to choose from² when setting up your network. Currently, The same model type is applied to every node

²See chapter 2

although their parameterization is node-specific. Besides the built-in model types, in the future, users will be able to define their own.

Network models are specified in a ASCII-text script file (see appendix A). EpiGrass comes with a few demo Network models for the user to play with until he/she is confident enough to build their own. Even then, it is advisable to use the demo scripts provided as templates to minimize syntax errors.

The script on the appendix A specifies a network model with an stochastic SEIR (see chapter 2) epidemic model in its nodes. The user should study this model and play with its parameters to understand the features of EpiGrass. A step-by-step tutorial on how to edit the model script can be found on chapter 4.

1.4 The Simulation

A simulation run in EpiGrass consists of a series of tasks performed at each time step³.

Calculate migration For all edges in the network, the number of persons traveling each way is determined for the current time-step.

Run epidemic models For each node in the network the epidemic demographics are updated based on the local number of infected and susceptible individuals which have been updated by the transportation system.

All aspects of the simulation such as number of passengers traveling on each edge, number of infected/susceptible on each node and etc., are recorded in a step-by-step basis. This complete record allows for the model to be analyzed after the simulation has been completed without having to recalculate it.

1.4.1 Output

The output of a simulation in EpiGrass is three-fold: A graphical display with an animation of the epidemic spread, a written PDF report, and a database table with numeric results.

³The number of time steps is defined in the model script

Graphical display

After the simulation is completed, selected epidemiological variables are animated in a 3-dimensional rendering over the map of the region containing the network (if one is available).

Report Generation

The report contains a detailed analysis of the network model and the simulations ran with it. The report generates a \LaTeX source file and compiles it to a PDF document for visualization.

Three types of report are currently available:

Report = 1 Returns a set of descriptors of the network, described in chapter 5

Report = 2 Returns a set of basic epidemiological measures and plots of the time series.

Report = 3 Report 1 + Report 2

Report Generation is an optional, though recommended, step done at the end of the simulation. For the report, descriptive statistics are generated for the network. These have to do with network topology and properties. Additional sections can be added to the report with basic statistical analyses of the output of pre-selected nodes⁴.

Database output

Time series of L (incidence), S , E , and I , from simulations, are stored in a MySQL database named *epigrass*. The results of each individual simulation is stored in a different table named after the model's script name, the date and time the simulation has been run. For instance, suppose you run a simulation of a model stored in a file named **script.epg**, then at the end of the simulation, a new table in the *epigrass* database will be created with the following name: **script_Wed_Jan_26_154411_2005**. Thus, the results of multiple runs from the same model get stored independently.

⁴Listed in the `siteRep` variable at the script

Chapter 2

Epidemic Models

2.1 Introduction

EPIDEMIOLOGICAL models are implemented in the EpiGrass environment as a tool to predict, understand and develop strategies to control the spread of infectious diseases at different time/spatial scales. In this context, there are two direct potential applications. One is to model the spread of new diseases through an entirely susceptible population (ecological invasion). The velocity of spread of new diseases in a network of susceptible populations depends on their spatial distribution, size, susceptibility and patterns of contact. In a spatial scale, climate and environment may also impact the dynamics of geographical spread as it introduces temporal and spatial heterogeneity. Understanding and predicting the direction and velocity of an invasion wave is key for emergency preparedness.

Besides invasion, network epidemiological models can also be used to understand patterns of geographical spread of endemic diseases. Many infectious diseases can only be maintained in a endemic state in cities with population size above a threshold, or under appropriate environmental conditions (climate, availability of a reservoir, vectors, etc). The variables and the magnitudes associated with endemicity threshold depends on the natural history of the disease (Keeling and Grenfell, 1997). These magnitudes may vary from place to place as it depends on the contact structure of the individuals. Predicting which cities are responsible for the endemicity and understanding the path of recurrent traveling waves may help us to design optimal surveillance and control strategies. For measles, for example, models suggest that geographical spread tend to follow a hierarchical pattern, starting in big cities (core) and then spreading to smaller neighborhood cities (satellites) (Grenfell et al., 2001).

EpiGrass implements a series of epidemiological models which, integrated with a set of analytical and visualization tools, may give us clues about the overall pattern of diseases spread in the geographical space. Besides, it can be used for scenario analysis to compare alternative intervention scenarios.

2.2 Disease models

Models of disease dynamics are quite diverse, ranging from caricatures to very detailed simulations. Traditional models of spread of diseases are based on the mean field assumption, i.e., that individuals interact randomly at a certain rate. Important references to the subject are (Diekmann and Heesterbeek, 2000; Daley et al., 2001; Isham and Medley, 1996; Anderson et al., 1992). These models are expressed mathematically as difference equations (discrete time) or differential equations (continuous time). In the simplest form, these models do not take into consideration either individual heterogeneity or the local nature of transmission events. Increased realism can be included by structuring the population according to age, risk behavior, sex, susceptibility, or other category associated with different risk of getting or transmitting the disease. Within each sub-population, however, the assumption of well mixing must hold. When other species are involved in the transmission process (non-human hosts and vectors), these are also considered as compartments that may be sub-divided as well according to covariates associated with the risk of acquiring or transmitting the disease.

In this context, epidemiological models take the form of multi-compartmental models where each compartment is a well-mixed homogeneous population. The model describes the transition of the individuals in this population through a sequence of disease-related stages. These stages could be *Susceptible*, *Infected*, *Recovered*, for example. And the transitions could be

$$Susceptible \longrightarrow Infected$$

$$Infected \longrightarrow Recovered$$

If only these transitions are allowed, then individuals in the recovered class never become susceptible again (lifelong immunity). If, on the other hand, immunity is only temporary (as in pertussis), then another transition should be included:

$$Susceptible \longrightarrow Infected$$

$$Infected \longrightarrow Recovered$$

$$Recovered \longrightarrow Susceptible$$

One way to visualize these models is using state-flow diagrams, where boxes represent states (compartments) and arrows indicate the transitions. It is the state identity together with the transitions allowed that define the type of model in use.

2.2.1 Dispersal of infected individuals

A key feature of EpiGrass is to allow the simulation of geographical spread of infection from one locality to others. Dispersal of infection is modeled as in a 'forest fire' model (Grenfell et al., 2001). An infected individual, traveling to another city, acts as a spark that may trigger an epidemic in the new locality. This approach is based on the assumption that individuals commute between localities and contribute temporarily to the number of infected in the new locality, but not to its demography. Further details about this approach can be found in Grenfell et al (2001).

In all models presented below, new infections in locality i arise from the contact between Susceptibles in i and Infectious individuals. Infectious individuals are of two types: those residents in i (I_t) and those visiting i (θ). Mathematically, this is written as:

$$L_{t+1} = \beta S_t \frac{(I_t + \theta)^\alpha}{N_t + n_t}$$

where L_{t+1} is the number of new cases, β is the contact rate between Susceptibles and Infectious individuals, S_t is the number of susceptibles, I_t is the number of infectious individuals resident in the locality, θ is the number of infectious individuals visiting the locality, N_t is the population residing in the locality and n_t is the total number of individuals visiting the locality. α is a mixing parameter. $\alpha = 1$ corresponds to homogeneous mixing (Finkenstadt and Grenfell, 2000).

2.2.2 Typology of infectious diseases and corresponding models

Here we present a brief description of the typology of infectious diseases based on their main route of transmission, and type of immunity associated to infection. They correspond to the types of models available in EpiGrass.

SIR-like models

The natural history of many directly transmitted infectious diseases can be appropriately described by a SIR-like model. *SIR* stands for Susceptible (S),

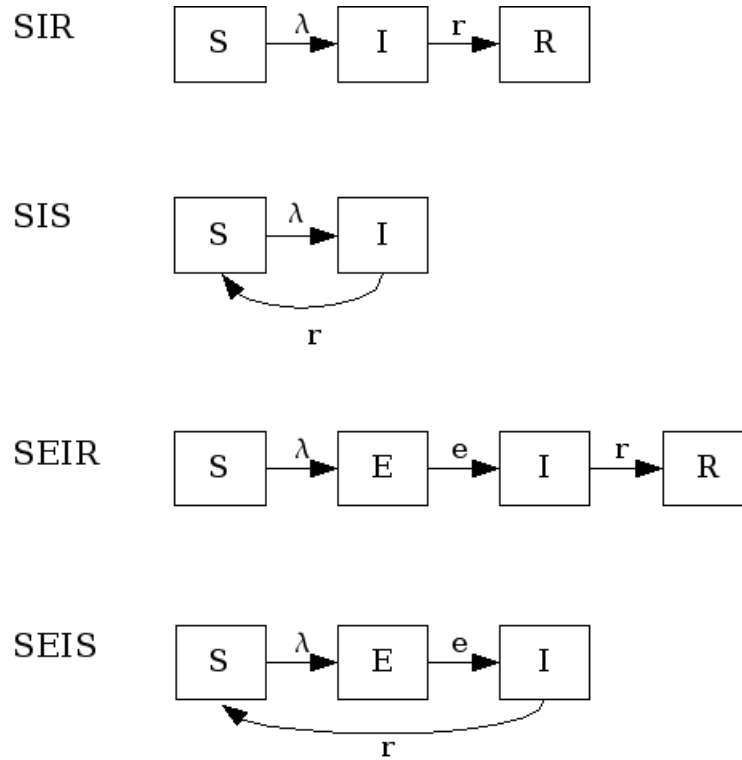


Figure 2.1: SIR-like models

Infected (I) and Recovered (R). Archetypal *SIRs* are measles or chickenpox, i.e., diseases that confer lifelong immunity (but see (Glass and Grenfell, 2004)). An individual starts his life in the S state and may progress to the I state. The rate of progression of individuals from S to I is called the incidence rate or force of infection (λ) which is a function of contact rate, probability of transmission per contact and density of infectious individuals. Individuals stay in the infectious period for a certain time and then move to the recovered state where they become immune to new infections. Generally, the removal rate from the infectious class is the inverse of the infectious period (i.e., it is assumed that the duration of infection is exponentially distributed).

Variations of this model consider that individuals do not acquire immunity after infection, thus returning to the susceptible pool (*SIS* model). Another variation is the inclusion of a latent stage to hold individuals that are infected but not infectious to others yet (incubation period). These are the *SEIR* (with immunity) and *SEIS* (no immunity) models.

Next, we describe each one of these models in their deterministic and

stochastic versions, as used by EpiGrass.

SIR models Examples of diseases represented by SIR models are measles, chickenpox. Some diseases that do not confer lifelong immunity may be represented by this model if only short term dynamics is of interest. In the scale of a year, influenza and pertussis, for example, could be described using SIR. The SIR model is implemented in EpiGrass as a system of four difference equations. Besides the three equations describing the dynamics of S , I and R , a fourth equation explicitly defines the number of new cases per time step, $L(t)$ (i.e., the incidence). In general, this quantity is embedded in the I equation (prevalence), but it is important to keep track of the incidence if one wishes to compare prediction with notification data.

$$\begin{aligned} L_{t+1} &= \beta S_t \frac{(I_t + \theta)^\alpha}{N_t + n_t} \\ I_{t+1} &= L_{t+1} + (1 - r)I_t \\ S_{t+1} &= S_t + B - L_{t+1} \\ R_{t+1} &= N_t - (S_{t+1} + I_{t+1}) \end{aligned} \tag{2.1}$$

This model can be easily extended to include diseases without recovery, for example AIDS, the so called SI models. Basically, the recovery rate is set to 0.

SIS models In the SIS model, individuals do not acquire immunity after the infection. They return directly to the susceptible class.

The only difference between *SIS* and *SIR* models is the absence of R and the flow of recovered individuals to the susceptible stage:

$$\begin{aligned} L_{t+1} &= \beta S_t \frac{(I_t + \theta)^\alpha}{N_t + n_t} \\ I_{t+1} &= L_{t+1} + (1 - r)I_t \\ S_{t+1} &= S_t + B - L_{t+1} + rI_{t+1} \end{aligned} \tag{2.2}$$

SEIR models These models have an extra compartment for those individuals who have acquired the infection but are still not infectious to others. This is the latent period and it is often parameterized as the inverse of the incubation period. Note, however, that for many diseases, initiation of infectiousness does not necessarily coincides with symptoms. In

Table 2.1: Symbols used in the models and their meaning

Symbol	Meaning.
L_t	number of newly infected individuals at time t
E	number of exposed but not infectious individuals at time t
I	number of infectious individuals at time t
R	number of recovered individuals at time t
β	contact rate (t^{-1})
θ	number of infectious visitors
α	mixing parameter ($\alpha = 1$ means homogeneous mixing)
n	number of visitors
N	population ($S + E + I + R$)
B	susceptible pool replenishment
r	fraction of I recovering from infection per unit of time ($[0, 1]$)
e	fraction of E becoming infectious per unit of time ($[0, 1]$)
δ	probability of acquiring immunity ($[0, 1]$)
w	probability of losing immunity ($[0, 1]$)
p	probability of recovered individual acquiring infection, given exposure ($[0, 1]$)

principle, any disease described by the SIR model can also be described by the SEIR model. The decision regarding the use of one or another depends on the magnitude of the latent period in relation to the time frame of other events in the simulation. The model has the form:

$$\begin{aligned}
L_{t+1} &= \beta S_t \frac{(I_t + \theta)^\alpha}{N_t + n_t} \\
E_{t+1} &= (1 - e)E_t + L_{t+1} \\
I_{t+1} &= eE_t + (1 - r)I_t \\
S_{t+1} &= S_t + B - L_{t+1} \\
R_{t+1} &= N_t - (S_{t+1} + I_{t+1} + E_{t+1})
\end{aligned} \tag{2.3}$$

SEIS models These are SIS models with the inclusion of the latent stage.

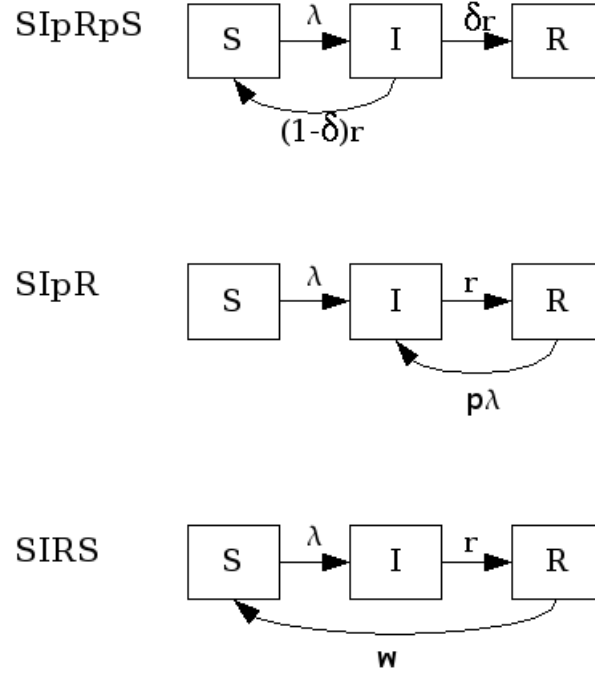


Figure 2.2: SIpR-like models.

$$\begin{aligned}
 L_{t+1} &= \beta S_t \frac{(I_t + \theta)^\alpha}{N_t + n_t} \\
 E_{t+1} &= (1 - e)E_t + L_{t+1} \\
 I_{t+1} &= eE_t + (1 - r)I_t \\
 S_{t+1} &= S_t + B - L_{t+1} + rI_t
 \end{aligned} \tag{2.4}$$

SIpR-like models

These are *SIR* models with immunity intermediary between full (*SIR*) and null (*SIS*). Some possibilities arise here: 1) Infection confers full immunity to a fraction of the individuals and the remaining ones return to the susceptible class again, after infection. (*SIpRpS*); 2) Infection provides only partial immunity and recovered individuals are partially susceptible to new infection (*SIpR*); 3) Immunity is full right after infection but wanes with time (*SIRS*). Each model is presented below. Figure 2.2 illustrates them diagrammatically.

Related models, that included the latent state *E* are: *SEIpRpS*, *SEIpR*, *SEIRS*.

SIpRpS model This model assumes that a fraction δ of infectious individuals acquire full immunity while the remaining $(1 - \delta)$ returns to the susceptible stage. The model is:

$$\begin{aligned} L_{t+1} &= \beta S_t \frac{(I_t + \theta)^\alpha}{N_t + n_t} \\ I_{t+1} &= L_{t+1} + (1 - r)I_t \\ S_{t+1} &= S_t + B - L_{t+1} + (1 - \delta)rI_t \\ R_{t+1} &= N_t - (S_{t+1} + I_{t+1}) \end{aligned} \quad (2.5)$$

SIpR model This model assumes that immunity is only partial and recovered individuals may acquire infection again (at a lower rate $p\lambda$, where $0 \leq p \leq 1$). Two equations calculate the number of new infections. L_S calculates the number of susceptibles that become infected at $t + 1$. L_R calculates the number of recovered that become infected at $t + 1$. The latter are less susceptible to the disease when compared to susceptibles. The model is:

$$\begin{aligned} L_{S,t+1} &= \beta S_t \frac{(I_t + \theta)^\alpha}{N_t + n_t} \\ L_{R,t+1} &= p\beta R_t \frac{(I_t + \theta)^\alpha}{N_t + n_t} \\ I_{t+1} &= L_{S,t+1} + L_{R,t+1} + (1 - r)I_t \\ S_{t+1} &= S_t + B - L_{S,t+1} \\ R_{t+1} &= N_t - (S_{t+1} + I_{t+1}) \end{aligned} \quad (2.6)$$

SIRS model Here, the immunity acquired by infection wanes with time. Pertussis is a disease with this characteristic.

$$\begin{aligned} L_{S,t+1} &= \beta S_t \frac{(I_t + \theta)^\alpha}{N_t + n_t} \\ I_{t+1} &= L_{S,t+1} + L_{R,t+1} + (1 - r)I_t \\ S_{t+1} &= S_t + B - L_{S,t+1} + wR_t \\ R_{t+1} &= N_t - (S_{t+1} + I_{t+1}) \end{aligned} \quad (2.7)$$

SnInRn-like models

These are models with more than one compartment for susceptibles, infected and recovered stages. They are used when infection involves more than one

distinct populations. Vector borne diseases are classical examples where a SIR model is used to describe infection in humans and another SIR-like model is used to describe infection in the vector (and/or the reservoir(s)). Dengue fever and yellow fever are examples. Sexually transmitted diseases may also be modeled with SnInRn models if male and female populations are distinguished. These models are still not available in EpiGrass.

2.2.3 Stochastic models

All models described so far are deterministic. EpiGrass allows simulation of stochastic processes. This is done by assuming that L_{t+1} is a random variable with expected value given by the expressions found in the deterministic models. The user may choose the probability distribution for L_{t+1} between Poisson or Negative Binomial to draw realizations of L_{t+1} :

$$l_{t+1} \sim \text{Poisson}(L_{t+1})$$

or

$$l_{t+1} \sim \text{NegBin}(I_t, \frac{I_t}{I_t + L_{t+1}})$$

The Poisson distribution assumes independent events while the negative Binomial assume clustering of transmission events.

2.3 Network transportation models

The transmission models describe the dynamics of infection in a well-mixed population. EpiGrass allows the user to model the movement of infectious individuals between well-mixed populations, thus simulating the spread of disease through space. EpiGrass represents geographical space as a network where cities or localities are nodes and transportation routes are edges. The term network refers to the framework of routes within a system of locations, identified as nodes or sites. An edge is a single link between two sites (a road, a railroad, an air route or a river/sea corridor).

Transportation networks, like many networks, are generally embodied as set of locations and a set of links representing connections between those locations. The arrangement and connectivity of a network is known as its *topology*. Major types of topology are illustrated in figure 4.4.2. Velocity and direction of disease spread depend on the topology and weight of the edges of the transport network and there are many properties of networks that may

useful when analyzing the spread of diseases. EpiGrass calculates a set of these properties, described in chapter 5:

In a transportation network, each edge (or link) is characterized by a variable *flow* which states the number of passengers that travel through that link per unit time. EpiGrass uses this information to calculate the number of passengers arriving at each city, per time step. For example, consider node $N1$ in figure 2.3. At each time step, it receives 10 passengers from $N2$, 5 from $N5$, 1 from $N4$. Now suppose that, at this time step, 10% of the population within each site is infectious (I state), according to the epidemic model. Thus, a total of $10\% \times 10 + 10\% \times 5 + 10\% \times 1 = 1.6$ infectious individuals are visiting site $N1$. In the epidemic model embedded in $N1$, EpiGrass sets $n = 16$ and $\theta = 1.6$.

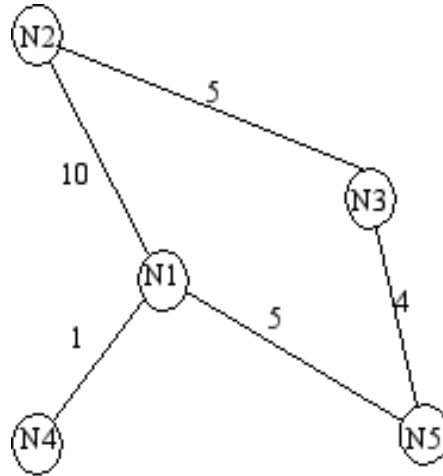


Figure 2.3: A simple transportation network

Chapter 3

Building and Installing

THIS chapter will walk through all aspects of EpiGrass installation. From obtaining, building and installing the prerequisites to the installation of EpiGrass itself.

Most of the steps will be quite simple and similar since they will make use of standard tools for package installation on two very popular GNU/Linux distributions: Debian (and derivatives), and Gentoo. If you use a different distribution, you should check its documentation for package installation instructions.

If, on your distribution, a package is not available for the required version, you can try to obtain an updated version of the package at the web-sites provided. On the rare cases where pre-built packages are not available, instructions on how to build the software from source should also be available from its web-site.

3.1 Required Packages

Python

Web-site: <http://www.python.org>

Version required: ≥ 2.3

Python is a simple but powerful object-orientated language. Its simplicity makes it easy to learn, but its power means that large and complex applications can be created. Its interpreted nature means that Python programmers are every productive because there is no edit/compile/link/run development cycle.

Python is probably installed automatically by your GNU/Linux distribution (it is on Gentoo). If not, it is best to use your distribution's standard tools for package installation. On Debian for example:

Listing 3.1: Installation of Python in a Debian-based Gnu/Linux distribution.

```
1 # apt-get install python
2 # apt-get install python2.3-dev
```

On Debian it is also necessary to install the development package of python whose name may vary depending on the version of python you have installed.

Numeric Python

Web-site: <http://www.numpy.org>

Version required: $\geq 2.3.0$

Numeric Python is a module for fast numeric computations in Python. On Debian there are several packages, one for each version of python supported. make sure you install all python related packages for the correct version number.

Example installations:

Listing 3.2: Installing Numeric python on Gentoo GNU/Linux

```
1 # emerge numeric
```

Listing 3.3: Installing Numeric python on Debian GNU/Linux

```
1 # apt-get install python2.3-numeric
2 # apt-get install python2.3-numeric-ext
```

Matplotlib

Web-site: <http://matplotlib.sourceforge.net>

Version required: $\geq 0.70.0$

Matplotlib is a Module that provides plotting capabilities to Python.

Listing 3.4: Installing Matplotlib on Gentoo GNU/Linux

```
1 # emerge matplotlib
```


Before using `apt-get` to install `matplotlib`, add these lines to your `/etc/apt/sources.list`:

Listing 3.5: Adding specific sources to `apt-get`.

```
1 deb http://anakonda.altervista.org/debian packages/  
2 deb-src http://anakonda.altervista.org/debian sources/
```

Listing 3.6: Installing `Matplotlib` on Debian GNU/Linux

```
1 # apt-get update  
2 # apt-get install python-matplotlib python-matplotlib-  
   doc
```

PyQt

Web-site: <http://www.riverbankcomputing.co.uk/pyqt/index.php>

Version required: ≥ 3.13

PyQt is a set of Python bindings for the Qt toolkit. PyQt combines all the advantages of Qt and Python. A programmer has all the power of Qt, but is able to exploit it with the simplicity of Python.

PyQt depends on the Qt libraries to run. This dependency will be taken care by the package installation tools of most distributions, which will automatically install the required version of Qt.

Example installations:

Listing 3.7: Installing PyQt python on Gentoo GNU/Linux

```
1 # emerge pyqt
```

Listing 3.8: Installing PyQt python on Debian GNU/Linux

```
1 # apt-get install python2.3-qt3
```

MySQL

Web-site: <http://www.mysql.com>

Version required: ≥ 4.0

MySQL is a fast, multi-threaded, multi-user SQL database server. If you have a MySQL server available in your LAN, you may skip this step after making sure you have permission to access and use it to store your data.

Example installations:

Listing 3.9: Installing MySQL on Gentoo GNU/Linux

```
1 # emerge mysql
```

Listing 3.10: Installing MySQL on Debian GNU/Linux

```
1 # apt-get install mysql-server
2 # apt-get install mysql-client
```

Post-install configuration: MySQL requires a few extra configuration steps that must be completed after the installation described above. These steps must be performed by the root user. If you already have a MySQL server installed you will need to know the root password to configure EpiGrass later.

Listing 3.11: Post-install configuration of mysql on Gentoo

```
1 # /etc/init.d/mysql start
2 # mysql_install_db
3 # mysqladmin -u root password new-password
4 # rc-update add mysql default
```

In the mysqladmin line, replace new-password with a password of your own.

Listing 3.12: Post-install configuration of mysql on Debian

```
1 # mysql_install_db
2 # safe_mysqld &
3 # /etc/init.d/mysql start
4 # mysqladmin -u root password new-password
```

MySQL-python

Web-site: <http://sourceforge.net/projects/mysql-python/>

Version required: $\geq 0.9.2$

This package is a MySQL module for Python.

Example installations:

Listing 3.13: Installing MySQL-python on Gentoo GNU/Linux

```
1 # emerge mysql-python
```

Listing 3.14: Installing MySQL-python on Debian GNU/Linux

```
1 # apt-get install python2.3-mysqldb
```

R

Web-site: <http://www.r-project.org>

Version required: ≥ 2.0

Example installations:

Listing 3.15: Installing R on Gentoo GNU/Linux

```
1 # emerge R
```

Listing 3.16: Installing R on Debian GNU/Linux

```
1 # apt-get install r-base
```

Post-install configuration: You have to install a few packages from within R afterward.

Listing 3.17: Installing additional packages from within R

```
1 > install.packages('RMySQL')
2 > install.packages('DBI')
3 > install.packages('lattice')
```

RPy

Web-site: <http://rpy.sourceforge.net/>

Version required: $\geq 0.4.0$

RPy is a very simple, yet robust, Python interface to the R Programming Language. It can manage all kinds of R objects and can execute arbitrary R functions (including the graphic functions). Example installations:

Listing 3.18: Installing RPy on Gentoo GNU/Linux

```
1 # emerge rpy
```

If the `rpy` package on Gentoo is masked¹, Build and install it from source as described below.

Listing 3.19: Installing RPy on Debian GNU/Linux

```
1 # apt-get install python2.3-rpy
```

¹Meaning that it can't be installed normally.

Depending on the Version of R installed, The installation of Rpy may not be successful. To test **rpy**, open a Python shell and type:

Listing 3.20: Testing the installation of RPy

```
1 >>> from rpy import *
2 >>> r.plot([1,2,3])
```

You should see a plot of three points generated by R. If instead, you get some error messages, you must install RPy from source. Download the RPy source tarball, unpack it, `cd` to the directory to which you unpacked it and type:

Listing 3.21: Installing RPy from source on GNU/Linux

```
1 # python setup.py install
```

RPy depends on R having been compiled with the option `--enable-R-shlib`. This is the default on Gentoo. If this installation fails on your system, you may have to get the latest version from rpy from its website and install from source by following these steps:

1. First of all, you **must** check that you have built R with the configure option `'--enable-R-shlib'`, in order to make R as a shared library. If not, the following steps should be enough:

Listing 3.22: Building R from source

```
1 <go to the R source directory>
2 # make distclean
3 # ./configure --enable-R-shlib
4 # make
5 # sudo make install
```

2. Then, configure the path to the R library. For this, make a link to `RHOME/bin/libR.so` in `/usr/local/lib` or `/usr/lib`, then run `ldconfig`, (substitute `RHOME` with the path where R is installed, usually `usrlocallibR`):

```
1 # sudo ln -s /usr/local/lib/R/lib/libR.so /usr/lib/libR.so
```

3. Ensure that you have the necessary header files for the version of R you are compiling against. You can check the version of R by running:

```
1 # R --version
2 R 2.0.1 (2004-11-15).
3 Copyright (C) 2004 R Development Core Team
```

```

4 |
5 | R is free software and comes with
6 | ABSOLUTELY NO WARRANTY.
7 | You are welcome to redistribute it under
8 | the terms of the GNU General Public License.
9 | For more information about these matters,
10| see http://www.gnu.org/copyleft/gpl.html.

```

There should be a subdirectory of the Rpy package with the name R-**<version>**. For the example above, R-2.0.1

If the correct version directory does not exist, you may have to go back to a version of R supported by rpy.

4. Now, just type:

```
1 | # python setup.py install
```

and that's all!

GRASS GIS

Web-site: <http://grass.itc.it/>

Version required: $\geq 5.0.3$

Listing 3.23: Installing GRASS on Gentoo GNU/Linux

```
1 | # emerge grass
```

Listing 3.24: Installing GRASS on Debian GNU/Linux

```

1 | # apt-get install grass
2 | # apt-get install grass-doc

```

L^AT_EX

Web-site: <http://www.tug.org/teTeX/>

Version required: ≥ 2.0

EpiGrass uses PDFL^AT_EX to generate a report with a summary analysis of your network and simulation model. Thus, it is necessary to have the Tetex package installed.

Listing 3.25: Installing L^AT_EX and PDFL^AT_EX on Gentoo GNU/Linux

```
1 # emerge tetex
```

Listing 3.26: Installing L^AT_EX and PDFL^AT_EX on Debian GNU/Linux

```
1 # apt-get install tetex-base
```

Installing VPython

Web-site: <http://www.vpython.org>

Version required: $\geq 3.1.1$

VPython is a library for the visualization of 3D objects in Python. Its required for the visualization module of EpiGrass.

Listing 3.27: Installing Vpython pre-requisites on Gentoo GNU/Linux

```
1 # emerge boost
```

Listing 3.28: Installing Vpython pre-requisites on Debian GNU/Linux

```
1 # apt-get install libboost-dev
2 # apt-get install libboost-python1.32.0
3 # apt-get install libboost-python-dev
4 # apt-get install gtkglarea5-dev
```

On Both distributions, after installing the boost libraries, you need to build VPython from sources. Please refer to VPython's web site for instructions. After your are done installing it, You can test it from a python shell (see listing 3.29)

Listing 3.29: Testing Vpython

```
1 >>> import visual
2 >>> sphere()
```

Installing EpiGrass

If you got through all the steps above, it will be an easy task to install EpiGrass:

Listing 3.30: Intalling EpiGrass

```
1 # python setup.py install
```

We have written an ebuild for installing EpiGrass on Gentoo. If it is unmasked at the time you decide to install EpiGrass, you don't need to worry about the dependencies above and only need to type the following command:

Listing 3.31: Installing EpiGrass on Gentoo GNU/Linux

```
1 # emerge epigrass
```


Chapter 4

Using Epigrass

To simulate an epidemic process in EpiGrass, the user needs to have in hand three files: Two files containing the site and edge data and a third file which is a script that defines what it is to be done. In this chapter, we go through each one of them in detail. As the last part of this chapter, is a step-by step guide the Graphical User Interface (GUI).

After a fresh installation of EpiGrass, a few example scripts and data sets are installed to the directory `/usr/share/epigrass/demos`. In order to be able to play with these demos, copy the contents of that directory to a directory on which you have write permission(e.g., any you create inside your home directory), open a shell window, go to that directory and invoke EpiGrass from there. The reason for that is that the reports of the simulations are written to the same directory epigrass was invoked from. It is also a good idea to keep the various simulation projects you develop inside their own separate directory so that the results from different simulations don't get mixed up.

4.1 Data

4.1.1 Site data file

See below an example of the content of a site file for a network of 10 cities. Each line corresponds to a site (except the first line which is the title). For each site, it is declared, in this order: its *spatial location* in the form of a pair of coordinates $([X,Y])$; a site *name* to be used in the output; the site's population; the site geocode (an arbitrary unique number which is used internally by EpiGrass).

₁||X,Y, City , Pop , Geocode

```

2 1,4,"N1",1000000,1
3 2,4,"N2",100000,2
4 3,4,"N3",1000,3
5 4,4,"N4",1000,4
6 5,4,"N5",1000,5
7 1,3,"N6",100000,6
8 2,3,"N7",1000,7
9 3,3,"N8",100000,8
10 4,3,"N9",100000,9
11 5,3,"N10",1000,10
12 1,2,"N11",1000,11

```

In this example, the first site is located at $[X,Y] = [1,4]$, it is named N1, its population is 1000000 and its geocode is 1. This is the minimum configuration of a site data file and it must contains this information in exactly this order.

In some situations, the user may want to add other attributes to the sites (different transmission parameters, or vaccine coverage or initial conditions for simulations). This information is provided by adding new columns to the minimum file. For example, if one wishes to add information on the vaccine coverage in cities N1 to N10 (*vac*) as well as information about average temperature (which hypothetically affects the transmission of the disease), the file becomes:

```

1 X,Y, City ,Pop , Geocode , Vac , Temp
2 1,4,N1,1000000,1,0.9,32
3 2,4,N2,100000,2,0.88,29
4 3,4,N3,1000,3,0.7,25
5 4,4,N4,1000,4,0.2,34
6 5,4,N5,1000,5,0,26
7 1,3,N6,100000,6,0,27
8 2,3,N7,1000,7,0,31
9 3,3,N8,100000,8,0,30
10 4,3,N9,100000,9,0,24
11 5,3,N10,1000,10,0,31

```

During the simulation, each site object receives these informations and store them in appropriate variables that can be used later during model specification. Population is stored in the variable N ; while the extra columns (those beyond the geocode) are stored in a tuple named *values*. For example, for the city N1, we have $N = 1000000$ and $values = [0.9, 32]$. During model specification, we may use N to indicate the population size, use $values[0]$

to indicate the level of vaccination of that city and *values*[1] to indicate the temperature.

It is up to the user, to know the meaning of the elements in the tuple *values* (Note that the first element of the tuple has index 0, the second one has index 1 and so on).

When using real data, one may wish to use actual geocodes and coordinates. For example, for a network of Brazilian cities, one may build the following file:

1	latitude , longitude , local , pop , geocode
2	−16:19:41 , −48:57:10 , ANAPOLIS , 280164 , 520110805
3	−10:54:32 , −37:04:03 , ARACAJU , 461534 , 280030805
4	−21:12:27 , −50:26:24 , ARACATUBA , 164449 , 350280405
5	−18:38:44 , −48:11:36 , ARAGUARI , 92748 , 310350405
6	−21:13:17 , −43:46:12 , BARBACENA , 103669 , 310560805
7	−22:32:53 , −44:10:30 , BARRA MANSA , 165134 , 330040705
8	−20:33:11 , −48:34:11 , BARRETOS , 98860 , 350550005
9	−26:54:55 , −49:04:15 , BLUMENAU , 241943 , 420240405
10	−22:57:09 , −46:32:30 , B. PAULISTA , 111091 , 350760505

In this file, the coordinates are the actual geographical latitude and longitude coordinates. This information is important when using EpiGrass integrated with Grass GIS. The geocode is also the official geocode of these localities. Despite the cumbersome size of the number, it may be worth using it because demographic official databases are often linked by this number. The site coordinates may be in sexagesimal or decimal format.

4.1.2 Edge data file

The edge data file contains all the direct links between sites. Each line in the file (except the first) corresponds to an edge. For each edge (or link) one must specify (in this order): the *names of the sites* connected by that edge; the *number of individuals traveling from source to destination*; the *number of individuals travelling from destination to source* per time step; the *distance or length* of the edge. At last, the file must contain, in the fifth and sixth columns, the *geocodes of the source and destination sites*. This is very important as graph is built internally connecting sites through edges and this is done based on geocode info.

IMPORTANT: It is required that the order of columns is kept the same

See below the list of the 8 edges connecting the sites $N1$ to $N10$. Let's look the first one, as an example. It links $N1$ to $N2$. Through this link passes 11 individuals backwards and forwards per time step (a day, for example). This edge has length 1. The last two columns show the geocode of $N1$ (geocode 1) and the geocode of $N2$ (geocode 2).

1	Source , Dest , flowSD , flowDS , Distance , geoSource , geoDest
2	N1,N2,11,11,1,1,2
3	N2,N4,0.02,0.02,1,3,4
4	N3,N8,1.01,1.01,1,3,8
5	N4,N9,1.01,1.01,1,4,9
6	N5,N10,0.02,0.02,1,5,10
7	N6,N5,1.01,1.01,1,7,8
8	N7,N10,1.01,1.01,1,7,8
9	N9,N10,1.01,1.01,1,9,10

Note that it doesn't matter which site is considered a Source and which one is considered a Destination. I.e., if there is a link between A and B , one may either named A as source and B as destination, or the other way around.

If the edge represents a road or a river, one may use the actual metric distance as length. If the edge links arbitrary localities, one may opt to use euclidean distance, calculated from the x and y coordinates.

4.2 Specifying a model: the script

Once the user has specified the two data files, the next step is to define the model to be executed. This is done in the `.epg` script file. The `.epg` script is a text file and can be edited with any editor (not word processor). This script must be prepared with care.

The best way to write down your own `.epg` is to edit an already existing `.epg` file. So, open **EpiGrass**, choose an `.epg` file and click on the **Edit** button. Your favorite editor will open and you can start editing. Don't forget to save it as a new file in your working directory. Of course, there is an infinite number of possibilities regarding the elaboration of the script. It all depends on the goals of the user.

For the beginner, we suggest him/her to take a look at the `.epg` files in the demo directory. They are all commented and may help the user in getting used with Epigrass language and capabilities.

Some hints to be successful when editing your `.epg`:

- All comments in the script are preceded by the symbol `#`. These comments may be edited by the user as he/she wishes and new lines may be added at will. Don't forget, however, to place the symbol `#` in every line corresponding to a comment.
- The script is divided into a few parts. These parts have capital letter titles within brackets. Don't touch them!
- Don't remove any line that is *not* a comment. See below how to appropriately edit these command lines.

Let's take a look now at each part of a script (this is the script.epg demo file):

4.2.1 PART 1: THE WORLD

The first section of the script is titled: THE WORLD. An example of its content is shown:

```
1 #=====#
2 [THE WORLD]
3 #=====#
4
5 location = BRASIL
6 vector layer = Limite_politico_administrativo
7 sites = sitios2.csv
8 edges = edgesout.csv
```

where

location: indicates the GRASS location where maps (raster and vector maps) for the region are stored (required only if GRASS location exists. If not, leave it blank: `location =`).

vector layer: Name of the vector layer, in the GRASS location, to be used as background to the network visualizer.

sites: this is the name of the .CSV file containing the list of sites and their attributes.

edges: this is the name of the .CSV file containing the list of edges and their attributes.

Table 4.1: Type of models implemented in EpiGrass

Model	Deterministic	Stochastic.
Susceptible-Infected-Recovered	SIR	SIR_s
Susceptible-Exposed-Infected-Recovered	SEIR	SEIR_s
Susceptible-Infected-Susceptible	SIS	SIS_s
Susceptible-Exposed-Infected-Susceptible	SEIS	SEIS_s
SIR with fraction with full immunity	SIpRpS	SIpRpS_s
SEIR with fraction with full immunity	SEIpRpS	SEIpRpS_s
SIR with partial immunity for all	SIpR	SIpR_s
SEIR with partial immunity for all	SEIpR	SEIpR_s
SIR with immunity wane	SIRS	SIRS_s

4.2.2 PART 2: EPIDEMIOLOGICAL MODEL

This is the main part of the script. It defines the epidemiological model to be run. The script reads:

```

1 #=====
2 [EPIDEMIOLOGICAL MODEL]
3 #=====
4 #model types available: SIS, SIS_s ,SIR, SIR_s, SEIS, SEIS_s,
5   SEIR, SEIR_s,
6 # SIpRpS, SIpRpS_s,SIpR,SIpR_s(see documentation for description
  )
  modtype = SIR

```

Here, the type of epidemiological model is defined, in this case is a deterministic SIR model. EpiGrass has some built-in models:

A description of these models can be found in section 2. The stochastic models use Poisson distribution as default for the the number of new cases (L_{t+1}). Following the script, we find:

Listing 4.1: Defining model parameter and initial values

```

1 #=====
2 [MODEL PARAMETERS]
3 #=====
4
5 # They can be specified as constants or as functions of global
6   or
7   site-specific variables. these site-specific variables , are
8   provided
9   in the sites file. All the numbers given after the geocode (4
10  th column)
11  # are collected into the values tuple.
12  # Examples:

```

```

10 # beta = 0.001
11 # beta=values[0] # assigns the first element of values to beta
12 # beta=0.001*values[1]
13
14 beta = 0.4    #transmission coefficient (contact rate *
               #transmissibility)
15 alpha = 1    # clumping parameter
16 e = 1        # inverse of incubation period
17 r = 0.1      # inverse of infectious period
18 delta = 1    # probability of acquiring full immunity [0,1]
19 B = 0        # Birth rate
20 w = 0        # probability of immunity waning [0,1]
21 p = 0        #

```

These are the model parameters, as described in table 2.1. Not all parameters are necessary for all models. For example, e is only required for SEIR-like models. Don't remove the line, however, because that will cause a syntax error. We recommend that, if the parameter is not necessary, just add a comment after it as a reminder that it is not being used by the model.

In some cases, one may wish to assign site-specific parameters. For example, transmission rate may be different between localities that are very distant and are exposed to different climate. In this case site specific variables can be added as new columns to the site file. All columns after the geocode are packed into a tuple named *values* and can be referenced as shown in listing 4.1. I.e., the first element of the tuple is *values*[0], the second element is *values*[1], the third element is *values*[2] and so on.

In the next part of the script, the initial conditions are defined. Here, the number of individuals in each epidemiological state, at the start of the simulation, is specified. The script reads:

```

1 [INITIAL CONDITIONS]
2
3 # Here, the number of individuals in each epidemiological
4 # state (SEI) is specified. They can be specified in absolute
5 # or relative numbers.
6 # N is the population size of each site.
7 # The rule defined here will be applied equally to all sites.
8 # For site-specific definitions, use EVENTS (below)
9 # Examples:
10 #      S,E,I = 0.8*N, 10, 0.5*N
11 #      S,E,I = 0.5*N, 0.01*N, 0.05*N
12 #      S,E,I = N-1, 1, 0
13 S = N
14 E = 0
15 I = 0

```

Here, N is the total population in a site (as specified in the sites file). In this example, we set all localities to the same initial conditions (all individuals susceptible) and use an event (see below) to introduce an infectious individual in a locality. The number of recovered individuals is implicit, as $R = N - (S + E + I)$

Another possibility is to define initial conditions that are different for each site. For this, the data must be available as extra columns in the site datafile and these columns are referenced to using the *values* tuple explained above.

The next step is to define events that will occur during the simulation. These events may be epidemiological (arrival of an infected, for example) or a public health action (vaccination campaign, for example):

Listing 4.2: Defining epidemic events

```

1 [EPIDEMIC EVENTS]
2
3 # Specify isolated events.
4 # Localities where the events are to take place should be
   Identified by a numeric code
5 # to come after population size on the sites data file.
6 # Seed : [( 'locality1's geocode ', n), ('locality2's geocode ', n)
   ].
7 # N infected cases will be added to locality at time 0.
8 # Vaccinate: [( 'locality1's geocode ', time, coverage), ( '
   locality2's geocode ', time, coverage)]
9 # Quarantine: [(locality1's geocode, time, duration), (locality2's
   geocode, time, duration)]
10 seed = [(230440005, 1)] #Fortaleza
11 Vaccinate = [(355030800, 31, 0.9)] #Sao Paulo
12 Quarantine = [(355030800, 20)]

```

The events currently implemented are:

seed One infected individual is introduced into a site. The notation for a single event is:

$$seed = [(geocode, timestep)]$$

For example, $seed = [(2, 1)]$ programs the arrival of an infected individual at site geocode 2, at time 1. For several events, the notation is:

$$seed = [(geocode1, timestep1), (geocode2, timestep2), (geocode3, timestep3)]$$

There is no limit to the number of events that can be included in this list.

Vaccinate Implements a campaign that vaccinates a fraction of the population in a site, at a pre-defined time-step. For a single event, the notation is:

$$[(geocode1, time, coverage)]$$

where the first element is the geocode of the city, the second element is the time when the campaign is implemented and the third element is the coverage. For example, the event $[(2, 10, 0.7)]$ means that city 2, at time 10, has 70% of its population vaccinated. Mathematically, it means (in the model), the removal of individuals from the susceptible to the recovered stage. For several events, we may have simultaneous vaccinations at two sites:

$$Vaccinate = [(1, 31, 0.9), (2, 31, 0.9)]$$

or subsequent campaigns in the same site:

$$Vaccinate = [(1, 31, 0.2), (1, 61, 0.3)]$$

Quarantine Prevents any individual from leaving a site, starting at t . The notation is:

$$Quarantine = [(geocode1, t), (geocode2, t)]$$

As an example, a quarantine in locality 2, that starts at day 10 is noted:
 $Quarantine = [(2, 10)]$

4.2.3 PART 3: TRANSPORTATION MODEL

Here, there are three options regarding the movement of infected individuals from site to site (through the edges). The parameter **doTransp** controls whether or not the transportation will be calculated. On most models it will be set to 1.

The parameter **stochastic** refers to how the number of people travelling is calculated. If *stochastic* = 0, the process is simulated deterministically. The number of infected passengers commuting through an edge is a fraction p of the infected population in the source site. p is calculated as $\frac{totalpassengers}{totalpopulation}$. If *stochastic* = 1, the number of passengers is sampled from a Poisson distribution with parameter given by the expected number of travelling infectives (calculated as above).

The parameter **speed** correspond to the speed of the transportation system in unit of distance per units of time. The user must be careful to make the units in this file agree with the one on the edges file.

```

1  #####
2  [TRANSPORTATION MODEL]
3  #####
4  # If doTransp = 1 the transportation dynamics will be
5  # included. Use 0 here only for debugging purposes.
6  doTransp = 1
7
8  # Mechanism can be stochastic (1) or deterministic(0).
9  stochastic = 1
10
11 #Average speed of transportation system in km per time step.
12   Enter 0 for instantaneous travel.
13 #Distance unit must be the same specified in edges files
14 speed =1440 # km/day -- equivalent to 60 km/h

```

That ends the definition of the model.

4.2.4 SIMULATION AND OUTPUT

Now it is time to define some final operational variables for the simulation:

```

1  #####
2  [SIMULATION AND OUTPUT]
3  #####
4
5  # Number of steps
6  steps = 200
7
8  # Output dir. Must be a full path. If empty the output will be
9  # generated on the
10 # outdata-<date> sub-directory of same path as the model script.
11 outdir =
12
13 # Database Output
14 # MySQLout can be 0 (no database output) or 1
15 MySQLout = 1
16
17
18 # Report Generation
19 # The variable report can take the following values:
20 # 0 - No report is generated.
21 # 1 - A network analysis report is generated in PDF Format.
22 # 2 - An epidemiological report is generated in PDF Format.
23 # 3 - A full report is generated in PDF Format.
24 # siteRep is a list with site geocodes. For each site in this
25 # list, a detailed report is apended to the main report.
26 report = 0

```

```

26 | siteRep = [230440005,355030800]
27 |
28 | #Replicate runs
29 | #If replicas is set to an integer(n) larger than zero, the model
    | will be run n times and the results will be con-
30 | solidated before storing.
31 | #Repilcate mode automatically turn off report and batch options.
32 | Replicas=0
33 |
34 | #Batch Run
35 | # list other scripts to be run in after this one. don't forget
    | the extension .epg
36 | # model scripts must be in the same directory as this file or
    | provide full path.
37 | # Example: Batch = ['model2.epg ', 'model3.epg ', '/home/jose/
    | model4.epg ']
38 | Batch = []

```

where

step Number of time steps for the simulation.

outdir Directory for data output. In this directory, various data useful to posterior analysis, will be saved. Currently, The adjacency matrix, the shortest path matrix and the shortest path distance matrix are being saved. In future versions, other data can be made available in this directory. If not specifically named, **outdir** defaults to **outdata-<date>**.

MySQLout Use **MySQLout** = 1 if simulated time series are to be stored in MySQL database. Time series of L, S, E , and I , from simulations, are stored in a MySQL database named *epigrass*. The results of each individual simulation is stored in a different table named after the model's script name, the date and time the simulation has been run. For instance, suppose you run a simulation of a model stored in a file named **script.epg**, then at the end of the simulation, a new table in the *epigrass* database will be created with the following name: **script.Wed_Jan_26_154411_2005**. Thus, the results of multiple runs from the same model get stored independently.

report Three types of report are currently available: *Report* = 1 returns a set of descriptors of the network, described in 5; *Report* = 2 returns a set of basic epidemiological measures and plots of the time series; *Report* = 3 is *Report1* + *Report2*. Report Generation is an optional, though recommended, step done at the end of the simulation. For the report, descriptive statistics are generated for the network. These have

to do with network topology and properties. Additional sections can be added to the report with basic statistical analyses of the output of pre-selected nodes, listed in the *siteRep* variable at the script.

siteRep=[] List of nodes for which network and epidemiological measures are to be calculated and included in the report.

Replicas The model can be run in replicate mode. This mode turns off the report and batch options. The results (database) table for the replicate mode, is an average of all replicates.

Batch=[] script files included in this list are executed after the currently file is finished.

4.3 User defined models

In future releases Epigrass will allow the user to define epidemiological models to be included into the sites.

4.4 Using Epigrass for specific tasks

Here we describe some things you could do with epigrass and some specific hints:

4.4.1 Describing a network

A user wants to obtain the topological properties of a network. Reasons for this could be: 1) learn how to interpret these measures, 2) describe a air transportation or a road transportation network. To do that, you need:

Set steps = 1 . If no model of disease is needed, then most of the .epg script can be ignored. Don't remove anything, however, from the script. Note that Epigrass requires a model in order to work properly, even if the user does not want it. One solution to reduce the run time, in this case, is to set **steps** to 1 (steps = number of steps in the simulation).

Set MySQLout = 0 . Network measures are not sent to database.

Set report = 1 . Report 1 calculates network measures and save them in a .pdf file.

Especify `siteRep` . If `siteRep = []`, only global network measures are included in the report. If site-specific measures are needed, include their geocodes in the list `siteRep`. For example, to calculate site stats for all nodes, `mesh1.epg` has:

```
report = 1
siteRep = [1,2,3,4,5,6,7,8,9,10,11,12,13,14,15,16,17,18,19,20]
```

Script `mesh1.epg` is configured this way. Run it and take a look at the report.

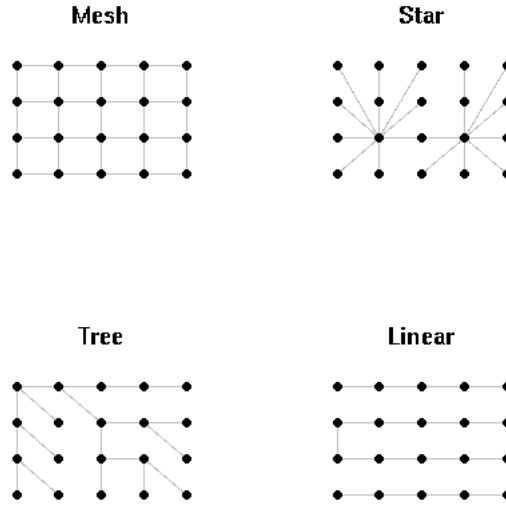
4.4.2 Comparing networks

A user wants to compare the properties of a set of networks. Reasons for this could be: 1) learn how to interpret these measures, 2) describe/compare a air transportation to a road transportation network, 3) analyse how network topology changes by adding/removing specific nodes or edges.

If there are four graphs, then four `.epg` files must be created. They all must set `report = 1` and `siteRep` to the desired specification (as above). Each file must be executed and each one will provide a report.

To speed things a little bit, the script allows the user to choose one of the files as a master file. In the option *BatchRun*, one may list the other scripts to be run after this one. They all must be in the same directory as the master file (or you may provide full path).

For example, suppose you want to compare the topologies of the four networks displayed in 4.4.2.



We created four files (mesh2.epg, star2.epg, lin2.epg, tree2.epg) and used one of them as master (mesh2.epg). The four files are exactly the same, except for the name of the edge file and the **Batch** specification. I.e., in mesh2.epg we specify:

```
Batch = ['star2.epg', 'lin2.epg', 'tree2.epg']
```

Now, mesh2.epg is run. One report will be delivered for each script (In future version of Epigrass, a more integrated result is planned). From the reports, we get network measures for the four graphs. These network measures are explained in chapter 5).

4.4.3 Simulate disease spread from a single site

The user specifies a network (let's say, a tree network) and wishes to simulate disease spread in this network. The graph is disease-free at time 0. At time 1, an infected person arrives at site $N1$. No control measures are introduced. The model chosen is SipRpS. The script file tree3.epg was built following these guidelines:

Initial conditions All individuals are initially susceptible, i.e., $S = N$.

Epidemic events An infected individual arrives at time 1 in $N1$.

steps=200 This may be increased or reduced, depending on the parameters.

Report = 2 . Report 2 returns only the epidemiological results.

Specify siteRep . If site-specific measures are needed, include their geocodes in the list siteRep. For example, to calculate site stats for three nodes, tree3.epg has:

```
report = 2
siteRep = [1,12,14]
```

Run this script and take a look at the report. A suggestion: change the script and seed the disease in a more central node. See how this affect the velocity of disease propagation.

4.4.4 Simulating vaccination campaigns

Vaccination may be simulated in different ways, using the section Epidemic Events in the script. These are some examples:

A single, local campaign . In site N1, exactly at time 10, with coverage 0.5

```
Vaccinate = [(1,10,0.5)]
```

Simultaneous campaigns in three sites . In sites N1, N4 and N6, exactly at time 10, with coverage 0.5

```
Vaccinate = [(1,10,0.5),(4,10,0.5),(6,10,0.5)]
```

Campaign with a time span . In site N1, a campaign that occurs from day 10 to day 15, with daily coverage of 0.1.

```
Vaccinate = [(1,10,0.1),(1,11,0.1),(1,12,0.1),(1,13,0.1),
(1,14,0.1),(1,15,0.1)]
```

4.4.5 Simulating quarantines

Quarantines are simulated similarly to vaccinations, but once they are initiated, they last until the end of the simulation:

Quarantine in a single place . In site N1, starting at time 10, with coverage 0.2

Quarantine = [(1,10,0.2)]

Quarantine in two places . In sites N1 and N3, at times 10 and 12, respectively, with coverage 0.5

Quarantine = [(1,10,0.5),(3,12,0.5)]

Quarantine with a time span . In site N1, a quarantine that starts at day 10 and ends at time 30, with daily coverage of 0.75.

Quarantine = [(1,10,0.75),(1,30,0)]

4.4.6 Comparing strategies

One goal of modeling diseases is to compare alternative control measures in terms of number of cases prevented. A set of scripts may be prepared to compare six alternative strategies for controlling the spread of an epidemic in the star graph, that was initiated at time 4 in site N1. For example:

Strategy vac1 Vaccinate site N1, at time 7, with coverage 0.8 .

Strategy vac2 Vaccinate sites N1, N12 and N14, at time 7, with coverage 0.8. N12 and N14 are central nodes of the star network and are natural candidates for vaccination.

Strategy mixed Strategy vac1 + quarantine in sites N12 and N14, coverage of 0.7.

Strategy quar Quarantine in sites N1, N12 and N14, coverage of 0.7.

4.5 The Graphical User Interface(GUI)

EpiGrass comes with a simple but effective GUI(figure 4.1), that allows the user to control some aspects of the run-time behavior of the system. The Gui can be invoked by typing `epigrass.py` in prompt of a console. EpiGrass should be started from the same directory where his/her model definition is located (.csv and .epg files).

All the information that is entered via the GUI gets stored in a hidden file called `.epigrassrc` stored in the home folder of the user. Every time the GUI is invoked, the data stored in the `.epigrassrc` file is used to fill the forms in the GUI. The gui is designed as a tabbed notebook with four tabs (Run Options, Settings, Utilities, and Visualization).

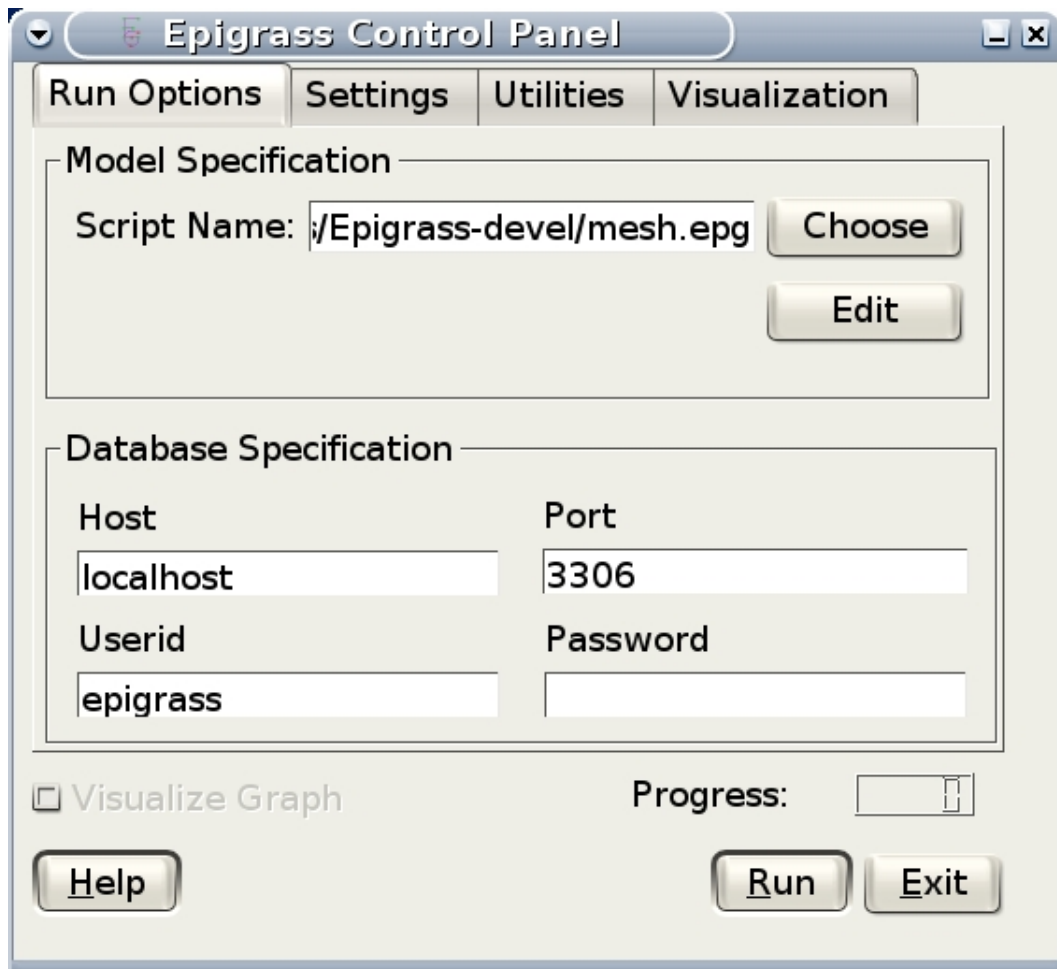


Figure 4.1: First tab of the EpiGrass GUI.

At the bottom of the Gui there are three buttons **Help**, **Start** and **Exit**. Their functions will be explained below. Immediately above the **Run** and **Exit** buttons, there is a small numeric display that will display the simulation progress after it has been started.

4.5.1 Run Options

The first tab of the GUI (figure 4.1), contains a number of variables that, with the exception of the model script filename, should remain the same for most simulations you are going to run.

On the top of the first tab is a text box to enter the file name of the model script (something.epg). By clicking on the **Choose** button at the

right of this box, you get a file selection dialog to select your script file. If you need you can click on the **Edit** button below to edit the script file with your favorite text editor.

Below, you can enter details about the MySQL database that will store the output of your simulations. Here you can enter the server IP, port, user and password. On the first time you run the GUI these input boxes will be filled with the default values for these variables (server on localhost, port 3306, user epigrass and password epigrass)

4.5.2 Settings

On the settings page (figure 4.2), you can enter personal details such as user name (To be used in the simulation report), preferred text editor and preferred PDF reader. The preferred text editor will be used to open your script from the GUI, when you click on the edit button in the first tab. The PDF reader specified, will be used to open the report file, when requested (Utilities tab) and the user manual, when the user clicks on the help button on the bottom-left corner of the GUI.

On this tab, the language of the GUI can also be selected from a list of available translations. The effects of language changes will only take place when the next time the GUI is started.

4.5.3 Utilities

In the Utilities tab (figure 4.3), you can get feed back from the simulator. Especially during long simulation runs, it is good to know how it is progressing. During the simulation, text messages regarding the status of the simulation are written to the text box on the left.

On the right, there is a button for backing up the data base and another for opening the report generated by the last simulation. Since report PDFs are stored in folder directly below the ones on which the simulation is started, older reports should still be accessible and can be opened directly by selecting the desired report using the operating system's file manager.

4.5.4 Visualization

The fourth tab of the GUI is the visualization Tab. This tab was designed for playing animations of any simulation data that is stored in the database. Pressin the **Scan DB** button, causes the available tables in the epigrass database to be listed in the **Simulations stored** combo box. The user can then select one of these simulations to visualize.

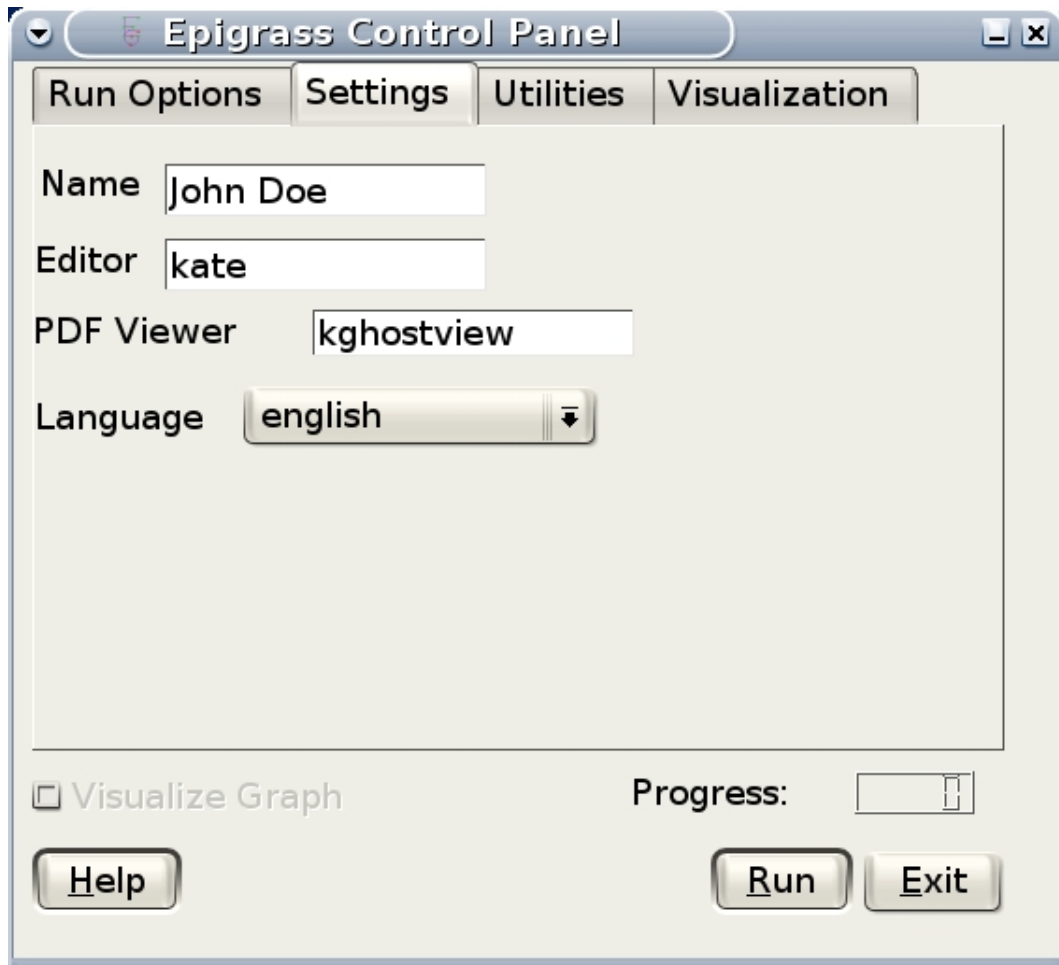


Figure 4.2: Second tab of the GUI.

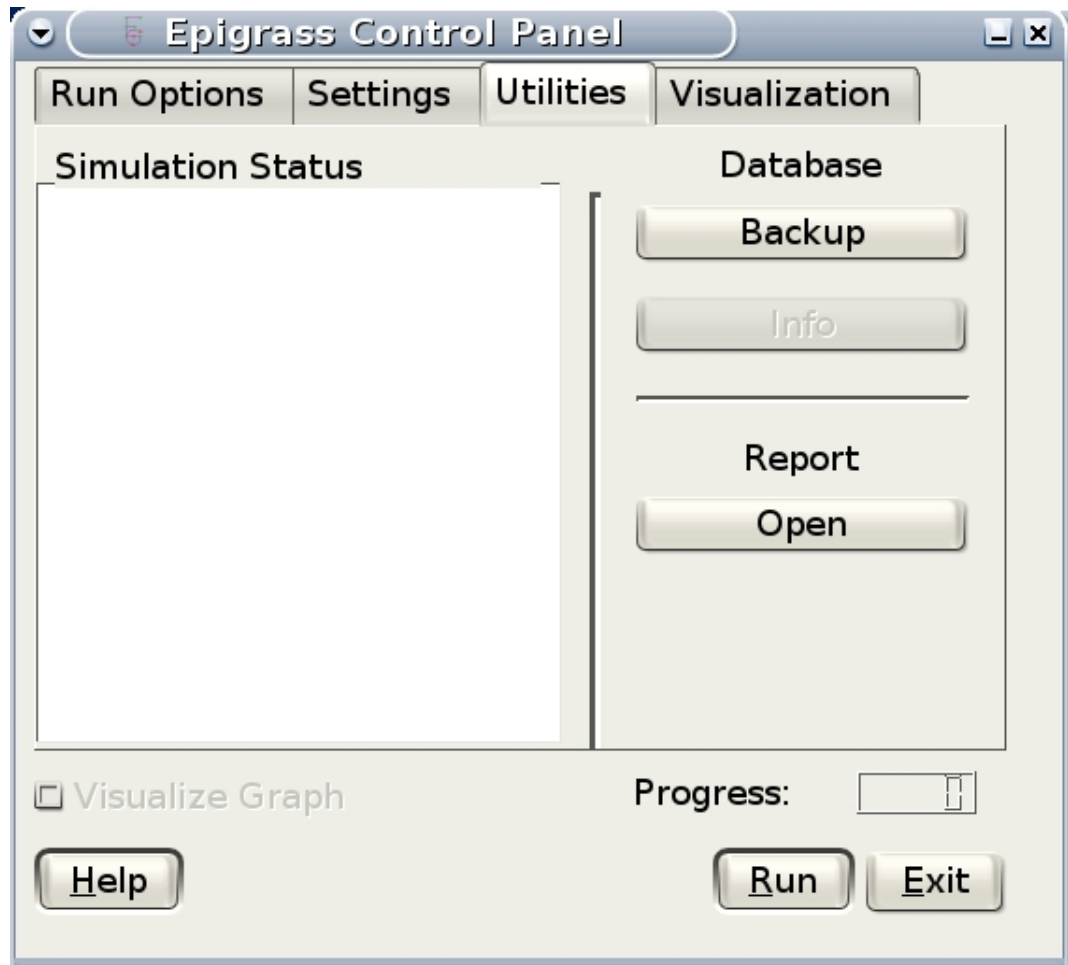


Figure 4.3: Third tab of the GUI

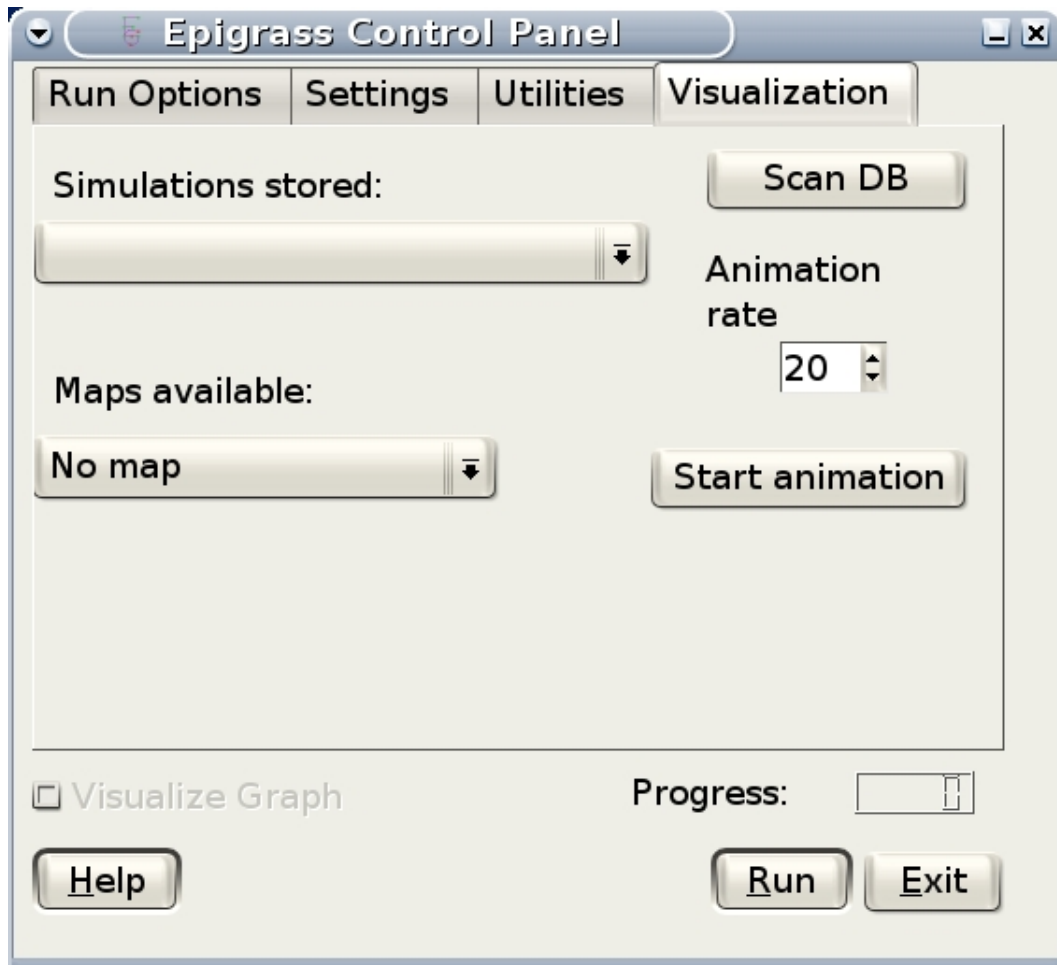


Figure 4.4: Fourth tab of the GUI

Once the **Start animation** button is pressed, a graphical display window pops up, and the simulation is replayed at a speed given by the frame rate set by the user or the maximum speed of the computer (whichever is smaller). In the animation, the nodes of the network are represented by boxes whose volume is given by the number of infected at each node. The node colors are as following: Green for uninfected nodes, and red to blue for infected nodes. bright red for first infected node with the nodes becoming infected later assuming a color with progressively more blue.

Maps can also be selected from the **Maps available** combo box to be used as background for the network display. The maps must be in the GRASS ascii vectorial format and have coordinates compatible with those given to the nodes of the simulation.

4.5.5 Operation

After all the information has been entered and checked on the GUI, you can press the **Run** button to start the simulation or the **Exit** button. When the **Run** button is pressed, the `.epigrassrc` file is updated with all the information entered in the gui. If the **Exit** button is pressed, all information entered since the last time the **Run** button was pressed is lost.

Chapter 5

Interpreting the output

The outputs of EpiGrass simulations were designed to be as flexible as possible. Beside the automated report generation which serves as an overview of the model and its results, raw data is also made available for ready utilization from other softwares such as R and Grass.

5.1 Visualization

On the graphical user interface, There is a visualization tab. On this tab the user can choose the simulation dataset and a map to compose the visualization. When the visualization is started, a display will pop up, and plot the network on the map (if a map is available). As the simulation progresses, the nodes change color from green to red as the localities become infected. Localities that get infected later are assigned a different shades of red which will tend to become blue as the time progresses. This way the sequence of infection remains visible throughout the simulation by means of this color scale.

The visualization module is to be invoked independently of the simulation to review the dynamics of simulation data stored on the database. This way, any previous simulation can be reviewed at any time. It is also recommended that simultaneous visualization be turned off to speed up calculations.

Currently, the visualization module displays only the temporal dynamics of infection with the number of infected individuals in each infected locality is represented by the size of the node object in the network plot.

5.2 Database

The simulated time series are stored in a MySQL table in the database *epigrass*: E, I, S, incidence (L), together with time, geocode, coordinates and site name. The table is named after the filename of the script and date and time of the simulation.

Epigrass provides an R script for importing the data into R for further analysis and display ¹.

5.3 Epidemiological descriptors

At the end of the simulation, *Epigrass* calculates a set of epidemiological stats. These stats are presented to the user in two ways: as a .csv table that can be imported by R or any other statistical package; and as a written (PDF format) report. Stats include descriptors of the epidemic dynamics at the whole graph level and also node-specific stats:

Graph-level stats:

Epidemic pop size Total number of cases in the whole graph during the simulation.

Epidemic size Total number of cities that had autochthonous transmission during the simulation.

Mean epidemic speed Average number of new localities infected per time step.

Epidemic Duration Time between the first and last case.

Median survival Time to reach 50% of the cities.

Vaccinated Total number of vaccinated individuals.

Quarantined Total number of quarantined individuals.

At the site scale, the report returns for each site i :

Incidence Accumulated number of new cases per time step

Local epidemic size Total number of cases that occurred in the site during the simulation.

Infectious arriving Number of infected individuals arriving per time step

¹see appendix C

5.4 Network Descriptive Statistics

EpiGrass automatically calculates and displays descriptive statistics about the network structure in Reports 1 and 3.

Basic Numbers

Order (Number of Nodes): The Number of localities the network is composed of.

Size (Number of Edges): The number of transportation routes connecting any pair of nodes.

Eulerian: Can be Yes or No, depending on if the network graph is eulerian or not. An Eulerian graph contains a circuit (Eulerian circuit) which includes all nodes and edges of the graph.

Traversable: Can be Yes or No, depending on if the network graph contains an Eulerian trail, i.e. a trail that includes all the nodes and edges of the graph.

Hamiltonian Can be Yes or Possibly, depending on if there is a circuit that contains all nodes of the graph (Hamiltonian circuit). This is not the result of an exhaustive search for Hamiltonian circuits on the graph (Since this would take a very long time for large graphs). This answer reflects the following theorem:

If the order O of a graph G is at least 3, and its nodes orders are at least $O/2$ for every node in G , then the graph contains a hamiltonian circuit.

Shortest-path Distribution

In a network there are frequently more than one path from locality A to locality B. Of these possible routes, the shortest path is the most important when dealing with epidemic processes over networks.

A network distance matrix can be calculated whose elements represent the number of edges separating any pair of nodes via the shortest path between them. From this matrix, a histogram of the shortest path lengths can be generated which gives us an idea of how fast an epidemic would spread in our network, if distance was the only factor.

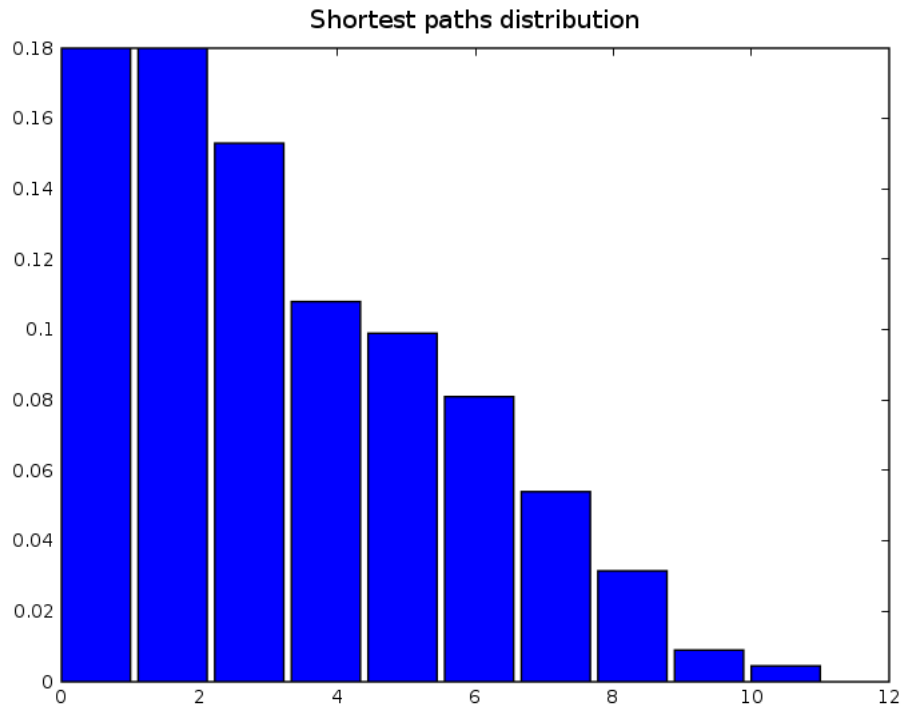


Figure 5.1: Shortest path distribution for the mesh graph (see demo).

Adjacency Matrix

The most basic measure of accessibility involves network connectivity where a network is represented as a connectivity matrix (figure 5.2), which expresses the connectivity of each node with its adjacent nodes.

The number of columns and rows in this matrix is equal to the number of nodes in the network and a value of 1 is given to each cell representing a directly connected pair and a value of 0 to each cell representing an unconnected pair. The summation of this matrix, along its rows or columns, provides a very basic measure of node accessibility, also known as the degree of a node.

indices = r"""

Number of Cycles

A cycle is a circular path, meaning that it ends where it started, and does not repeat an edge. The index presented here is the maximum number of

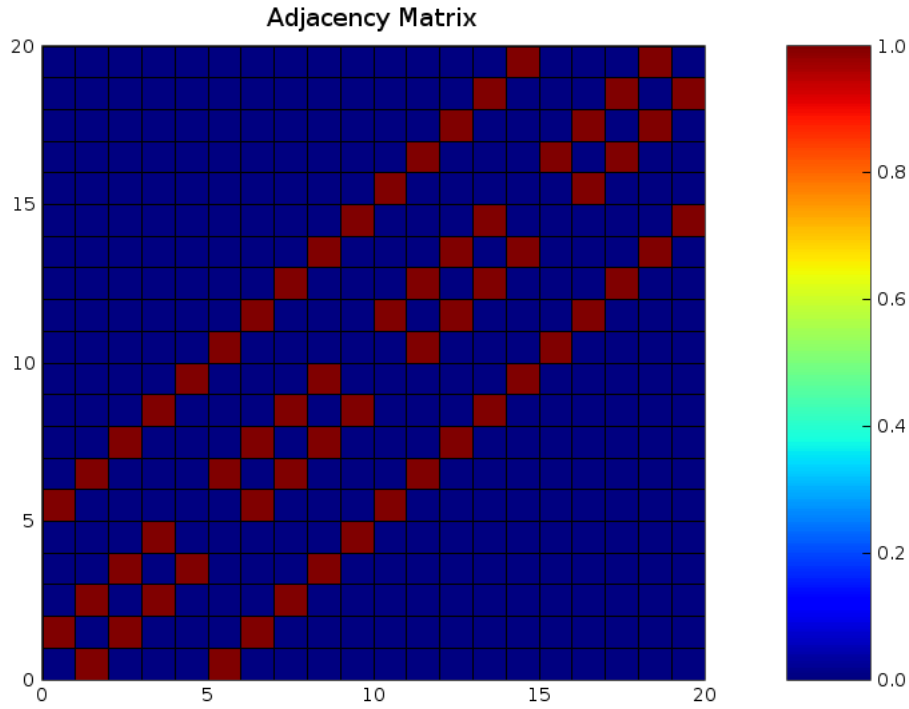


Figure 5.2: Adjacency matrix of a simple mesh network (see demo)

independent cycles in a network.

This number (u) is estimated by knowing the number of nodes (v), links (e) and of sub-graphs (p);

Trees and simple networks will have a value of 0 since they have no cycles. The more complex a network is, the higher the value of u , so it can be used as an indicator of the level of development of a transport system.

$$u = e - v + p$$

Wiener Distance (D_W)

The Wiener distance is the sum of all the shortest distances in the network.

$$D_W = \sum_{i=1}^v \sum_{j=1}^i D_{ij}$$

where D is the Shortest distance matrix.

Mean Distance(\bar{D})

The mean distance of a network is the mean of the set of shortest paths, excluding the 0-length paths.

$$\bar{D} = \frac{1}{v} \sum_{i=1}^v \sum_{j=1}^i D_{ij} \quad \forall D_{ij} \neq 0$$

Network Diameter

The diameter of a network is the longest element of the shortest paths set.

Length of the Network (L)

The length of a network is the sum in metric units (e.g., km) of all the edges in the network.

Weight of the Network(W)

The weight of a network is the weight of all nodes in the graph (W), which is the summation of each node's order (o) multiplied by 2 for all orders above 1.

$$W = 2 \sum_i o_i \quad \forall o > 1$$

Iota Index(ι)

The Iota index measures the ratio between the network and its weighed vertices. It considers the structure, the length and the function of a network and it is mainly used when data about traffic is not available.

It divides the length of a network (L) by its weight (W). The lower its value, the more efficient the network is. This measure is based on the fact that an intersection (represented as a node) of a high order is able to handle large amounts of traffic.

$$\iota = \frac{L}{W} =$$

Pi Index(Π)

The Pi index represents the relationship between the total length of the network L and the distance along the diameter D .

It is labeled as Pi because of its similarity with the trigonometric Π (3.14), which is expressing the ratio between the circumference and the diameter of a circle.

A high index shows a developed network. It is a measure of distance per units of diameter and an indicator of the shape of a network.

$$\Pi = \frac{L}{D}$$

Beta (β) Index

The Beta index measures the level of connectivity in a network and is expressed by the relationship between the number of edges (e) over the number of nodes (v).

Trees and simple networks have Beta value of less than one. A connected network with one cycle has a value of 1. More complex networks have a value greater than 1. In a network with a fixed number of nodes, the higher the number of links, the higher the number of paths possible in the network. Complex networks have a high value of Beta.

$$\beta = \frac{e}{v}$$

5.5 Site Oriented Statistics

Centrality: Also known as closeness. A measure of global centrality, is the inverse of the sum of the shortest paths to all other nodes in the graph.

Degree: The order (degree) of a node is the number of its attached links and is a simple, but effective measure of nodal importance.

The higher its value, the more a node is important in a graph as many links converge to it. Hub nodes have a high order, while terminal points have an order that can be as low as 1.

A perfect hub would have its order equal to the summation of all the orders of the other nodes in the graph and a perfect spoke would have an order of 1.

Theta Index: Measures the function of a node, that is the average amount of traffic per intersection. The higher theta is, the greater the load of the network.

Betweenness: Is the number of times any node figures in the the shortest path between any other pair of nodes.

Appendices

Appendix A

Example of Model Definition Script

```
1 #####
2 #
3 # EPIGRASS – Model Definition
4 # This script describes model and parameters specified
5 # by the user.
6 # It can be edited by the user directly , by means of a text
7 # editor.
8 # WARNING: No variables may be removed, even if not used by the
9 # chosen model .
10 # Any comments added by the user must be preceeded by the
11 # symbol #
12 #
13 #####
14 [THE WORLD]
15 #####
16 # Here you add information about the files that described the
17 # world the model is enclosed
18 # "Location" is the GRASS location with the maps describing the
19 # area.
20 # "vector layer" is the map layer that will be used as a
21 # background for the network display
22 # "sites" and "edges" are the files that describe the topology
23 # of the network (see Documentation)
24
25 location = BRASIL
26 vector layer = Limite_politico_administrativo
27 sites = sitios2.csv
28 edges = edgesout.csv
```

```

25 |
26 | #####
27 | [EPIDEMIOLOGICAL MODEL]
28 | #####
29 | #model types available: SIS, SIS_s, SIR, SIR_s, SEIS, SEIS_s,
30 | SEIR, SEIR_s,
31 | # SIpRpS, SIpRpS_s, SIpR, SIpR_s(see documentation for description
32 | )
33 | modtype = SIR
34 |
35 | #####
36 | [MODEL PARAMETERS]
37 | #####
38 | # They can be specified as constants or as functions of global
39 | or
40 | # site-specific variables. these site-specific variables, are
41 | provided
42 | # in the sites file. All the numbers given after the geocode (4
43 | th column)
44 | # are collected into the values tuple.
45 | # Examples:
46 | # beta = 0.001
47 | # beta=values[0] #assigns the first element of values to beta
48 | # beta=0.001*values[1]
49 |
50 | beta = 0.4 #transmission coefficient (contact rate *
51 | transmissibility)
52 | alpha = 1 #clumping parameter
53 | e = 1 #inverse of incubation period
54 | r = 0.1 #inverse of infectious period
55 | delta = 1 #probability of acquiring full immunity [0,1]
56 | B = 0 #Birth rate
57 | w = 0 #probability of immunity waning [0,1]
58 | p = 0 #Probability of a recovered become infected per
59 | time step [0,1]
60 |
61 | #####
62 | [INITIAL CONDITIONS]
63 | #####
64 | # Here, the number of individuals in each epidemiological
65 | state (SEI) is specified. They can be specified in absolute
66 | or relative numbers.
67 | # N is the population size of each site.
68 | # The rule defined here will be applied equally to all sites.
69 | # For site-specific definitions, use EVENTS (below)
70 | # Examples:
71 | # S,E,I = 0.8*N, 10, 0.5*E

```

```

67 #  $S, E, I = 0.5 * N, 0.01 * N, 0.05 * N$ 
68 #  $S, E, I = N - 1, 1, 0$ 
69 S = N
70 E = 0
71 I = 0
72
73 #=====
74 [EPIDEMIC EVENTS]
75 #=====
76 # Specify isolated events.
77 # Localities where the events are to take place should be
78 # Identified by the geocode, which
79 # comes after population size on the sites data file.
80 # All coverages must be a number between 0 and 1.
81 # Seed : [( 'locality1 's geocode ', n), ( 'locality2 's geocode ', n)
82 # ].
83 # N infected cases will be added to locality at time 0.
84 # Vaccinate: [( 'locality1 's geocode ', time, coverage), ( 'locality2 's geocode ', time, coverage)]
85 # Quarantine: [( locality1 's geocode, time, coverage), ( locality2 's geocode, time, coverage)]
86 seed = [(230440005, 1)] #Fortaleza
87 Vaccinate = [(355030800, 31, 0)] #Sao Paulo
88 Quarantine = [(355030800, 20, 0)]
89
90 # The following events have not yet been implemented
91 #Screening = (locality, time, coverage) #screening for sick
92 #people on airports bus stations
93 #Vector_control = (locality, time, coverage)
94 #Treatment = (locality, time, coverage)
95 #Prophylaxis = (locality, time, coverage)
96
97 #=====
98 [TRANSPORTATION MODEL]
99 #=====
100 # If doTransp = 1 the transportation dynamics will be included.
101 # Use 0 here only for debugging purposes.
102 doTransp = 1
103
104 # Mechanism can be stochastic (1) or deterministic(0).
105 stochastic = 1
106
107 # Average speed of transportation system in km per time step.
108 # Enter 0 for instantaneous travel.
109 #Distance unit must be the same specified in edges files
110 speed = 1440 # km/day -- equivalent to 60 km/h
111
112 #=====
113 [SIMULATION AND OUTPUT]

```

```

109  ##
110
111  # Number of steps
112  steps = 400
113
114  # Output dir. Must be a full path. If empty the output will be
115  generated on the
116  # outdata-<date> sub-directory of same path as the model script.
117  outdir =
118
119  # Database Output
120  # MySQLout can be 0 (no database output) or 1
121  MySQLout = 1
122
123  # Graphical outputs
124  draw map = 1
125
126  # Report Generation
127  # The variable report can take the following values:
128  # 0 - No report is generated.
129  # 1 - A network analysis report is generated in PDF Format.
130  # 2 - An epidemiological report is generated in PDF Format.
131  # 3 - A full report is generated in PDF Format.
132  # siteRep is a list with site geocodes. For each site in this
133  list, a detailed report is apended to the main report.
134  report = 0
135  siteRep = [230440005,355030800]
136
137  #Replicate runs
138  #If replicas is set to an integer(n) larger than zero, the model
139  will be run n times and the results will be con-
140  solidated before storing.
141  #Repilcate mode automatically turn off report and batch options.
142  Replicas=0
143
144  #Batch Run
145  # list other scripts to be run in after this one. don't forget
146  the extension .epg
147  # model scripts must be in the same directory as this file or
148  provide full path.
149  # Example: Batch = ['model2.epg', 'model3.epg', '/home/jose/
150  model4.epg']
151  Batch = []
152
153  #####
154  #####

```

Appendix B

Useful GRASS Commands

In this appendix, a few GRASS commands will be introduced based on their usefulness for the average EpiGrass user.

All the tasks presented in this chapter will be done using the GRASS command line interface. However most of them can also be done through the GRASS GUI. We leave to the user to find out how to perform these tasks using the GUI.

B.1 Exporting a GRASS Vector Layer

Like in any GIS, in GRASS maps are stored as vectorial objects. however these object are stored in binary formats that can't be read by EpiGrass. To be able to use maps from a given GRASS Location dataset in EpiGrass, we must export the vector layers to an ASCII file. Fortunately, the GRASS GIS provides us with the means to do that.

To be able to follow this example, you must have GRASS installed and a Location dataset available on your disk. Once you start GRASS you will be asked to select the location dataset to open. Once you open the desired dataset you will be able to explore your map collection and choose which layers to export.

Listing B.1: Listing vector layers.

```
1 GRASS 6.0.0~ / > g.list vect
```

Listing B.1, shows how to obtain a list of the available vector layers. Once you identify a layer that looks like the on you want to use as a background for your EpiGrass simulations take note of its name. You may want to visualize it before exporting.

Listing B.2: Visualizing a vector layer

```
1 GRASS 6.0.0~ / > dmon x0
2 GRASS 6.0.0~ / > d.vect Layer_name
```

The commands on listing B.2 will plot the chosen vector layer. the first command will open a display window, and the second will plot the layer we chose.

Once we are certain that is the map we want, we can proceed to exporting it.

Listing B.3: Exporting a vector layer to an ascii file

```
1 GRASS 6.0.0~ / > v.out.ascii input=Layer_name output=
  filename.map format=standard
```

It is important that we add the extension `.map` to the file we generate, so that EpiGrass visualization module will recognize it.

The map file generated here must be put in the working directory of your EpiGrass model to be used.

Appendix C

Using R to Analyze EpiGrass' Data

Depending on the size of your network or the number of scenarios being simulated on a given network within EpiGrass, A large amount of data is generated as output. This data is stored, by default on a MySQL database named epigrass.

On this appendix, we illustrate how to access this data on the MySQL server and do some simple analysis using the statistical package R. The R statistical package (<http://www.r-project.org>) is an incredibly resourceful environment for data management and analysis.

C.1 Accessing The MySQL server

Before we can access the database and retrieve our data there are some preliminary steps that must be performed. First and foremost, we need to learn how to start the R system. Just open a console window and type R as shown on listing C.1.

Listing C.1: Starting R

```
1 $ R
2 R : Copyright 2004, The R Foundation for Statistical Computing
3 Version 2.0.1 (2004-11-15), ISBN 3-900051-07-0
4
5 R is free software and comes with ABSOLUTELY NO WARRANTY.
6 You are welcome to redistribute it under certain conditions.
7 Type 'license()' or 'licence()' for distribution details.
8
9 R is a collaborative project with many contributors.
10 Type 'contributors()' for more information and
```

```

11 'citation()' on how to cite R or R packages in publications.
12
13 Type 'demo()' for some demos, 'help()' for on-line help, or
14 'help.start()' for a HTML browser interface to help.
15 Type 'q()' to quit R.
16
17 >

```

Very well, Now you are running R. R has a modular architecture that allows the user to specify the tools he/she desires to use on a given session. In order to access the MySQL database server and retrieve our data, we will need some special tools from R's vast collection of modules (also called packages). Listing C.2, shows how to load the packages needed.

Listing C.2: Loading required packages.

```

1 > library(DBI)
2 > library(RMySQL)

```

To connect to a database server we need to tell R the type of server we will be connecting to, and open a connection to it (listing C.3).

Listing C.3: Specifying the type of server and opening a connection.

```

1 > drv <- dbDriver("MySQL")
2 > con <- dbConnect(drv, username='epigrass',password='epigrass',
, host='localhost',dbname='epigrass')

```

Once we have a connection to the database it works as a two-way communications pipeline between R and the MySQL server. Through this connection we can send SQL commands to the Server and retrieve the results of these commands.

Fortunately, the RMySQL package has many common SQL statements packed into easy to remember commands. Listing C.4 shows us how to find out the tables available at the epigrass database. This is a very useful command for us because the results of each simulation completed in EpiGrass is stored in a separate table whose title is contains a reference to when it was ran. So, after running a few simulations with the demo model mesh, we will end up with a list of tables similar to the one shown on listing C.4.

Listing C.4: Listing existing tables.

```

1 > tables<-dbListTables(con)
2 > tables
3 [1] "mesh_Mon_Feb_14_110816_2005"    "mesh_Mon_Feb_14_111026_2005"
4 [3] "mesh_Tue_Feb_15_144139_2005"    "mesh_Tue_Feb_15_171743_2005"

```



```
5 | [5] "mesh_Tue_Feb_15_172037_2005"      "mesh_Tue_Feb_15_172134_2005"
    |
```

After we identify which set of data(table) we want to work with, we can read it into a data frame, a very versatile data structure of R.

```
1 | > results<- dbReadTable(con , tables [2])
2 | > names (results)
3 | [1] "geocode"      "time"         "name"         "lat"         "longit"
    |      "E"
4 | [7] "I"            "S"            "incidence"
```

On line 1 of listing C.1, we read the second table of our database into a data frame object called **results**. The **names** command, lists the names of the variables contained in that data frame.

C.2 Visualizing the Data

Once we have have the data inside R there countless ways in which we can manipulate and visualize it. For the first plot we will need to load another package called **lattice**.

```
1 | > library(lattice)
2 | > xyplot(I+E+S~time|name,type="l",data=results)
```


Bibliography

- Anderson, R., May, R., and Anderson, B. (1992). *Infectious Diseases of Humans: Dynamics and Control*. Oxford University Press.
- Barrett, C., Eubank, S., and Smith, J. (2005). If smallpox strikes portland... *Scientific American*, www.sciam.com:41–49.
- Bivand, R. (2000). Usando a linguagem de análise de dados estatísticos r em arquivos de banco de dados do grass 5.0 sig. *Computers & Geosciences*, 26:1043–1052.
- Casman, E., Fischhoff, B., Palmgren, C., Small, M., and Wu, F. (2000). An integrated risk model of a drinking-water-borne cryptosporidiosis outbreak. *Risk Anal*, 20(4):495–511.
- Daley, D., Gani, J., and Cannings, C. (2001). *Epidemic Modelling : An Introduction*. Cambridge University Press.
- Diekmann, O. and Heesterbeek, J. (2000). *Mathematical Epidemiology of Infectious Diseases : Model Building, Analysis and Interpretation*. John Wiley & Sons.
- Glass, K. and Grenfell, B. (2004). Waning immunity and subclinical measles infections in England. *Vaccine*, 22(29-30):4110–6.
- Grenfell, B., Bjørnstad, O., and Kappey, J. (2001). Travelling waves and spatial hierarchies in measles epidemics. *Nature*, 414(6865):716–23.
- Isham, V. and Medley, G., editors (1996). *Models for Infectious Human Diseases : Their Structure and Relation to Data*. Cambridge University Press.
- Keeling, M. and Grenfell, B. (1997). Disease extinction and community size: modeling the persistence of measles. *Science*, 275(5296):65–7.

- Meyers, L. A., Pourbohloul, B., Newman, M. E. J., Skowronski, D. M., and Brunham, R. C. (2005). Network theory and SARS: predicting outbreak diversity. *J Theor Biol*, 232(1):71–81.
- Zaric, G. S. and Brandeau, M. L. (2002). Dynamic resource allocation for epidemic control in multiple populations. *IMA J Math Appl Med Biol*, 19(4):235–55.

Index

- Database, 5
 - epigrass database, 5
 - results table, 5
- Display, 5
- GRASS, 2
 - location, 2
 - vector layer, 2
- Installation, 17
 - L^AT_EX, 23
 - GRASS, 23
 - Matplotlib, 18
 - MySQL, 19
 - MySQL-Python, 20
 - Numeric Python, 18
 - PyQt, 19
 - Python, 17
 - R, 21
 - RPy, 21
 - VPython, 24
- Models, 3
 - epidemiological models, 3, 7
 - network model, 4
 - SEIR, 11
 - SEIS, 12
 - SIPRpS, 14
 - SIR, 11
 - SIRS, 14
 - SIS, 11
 - stochastic, 15
 - transportation, 15
 - typology, 9
- Network, 1
 - edge, 3
 - node, 2
- Report, 5
- Simulation, 4